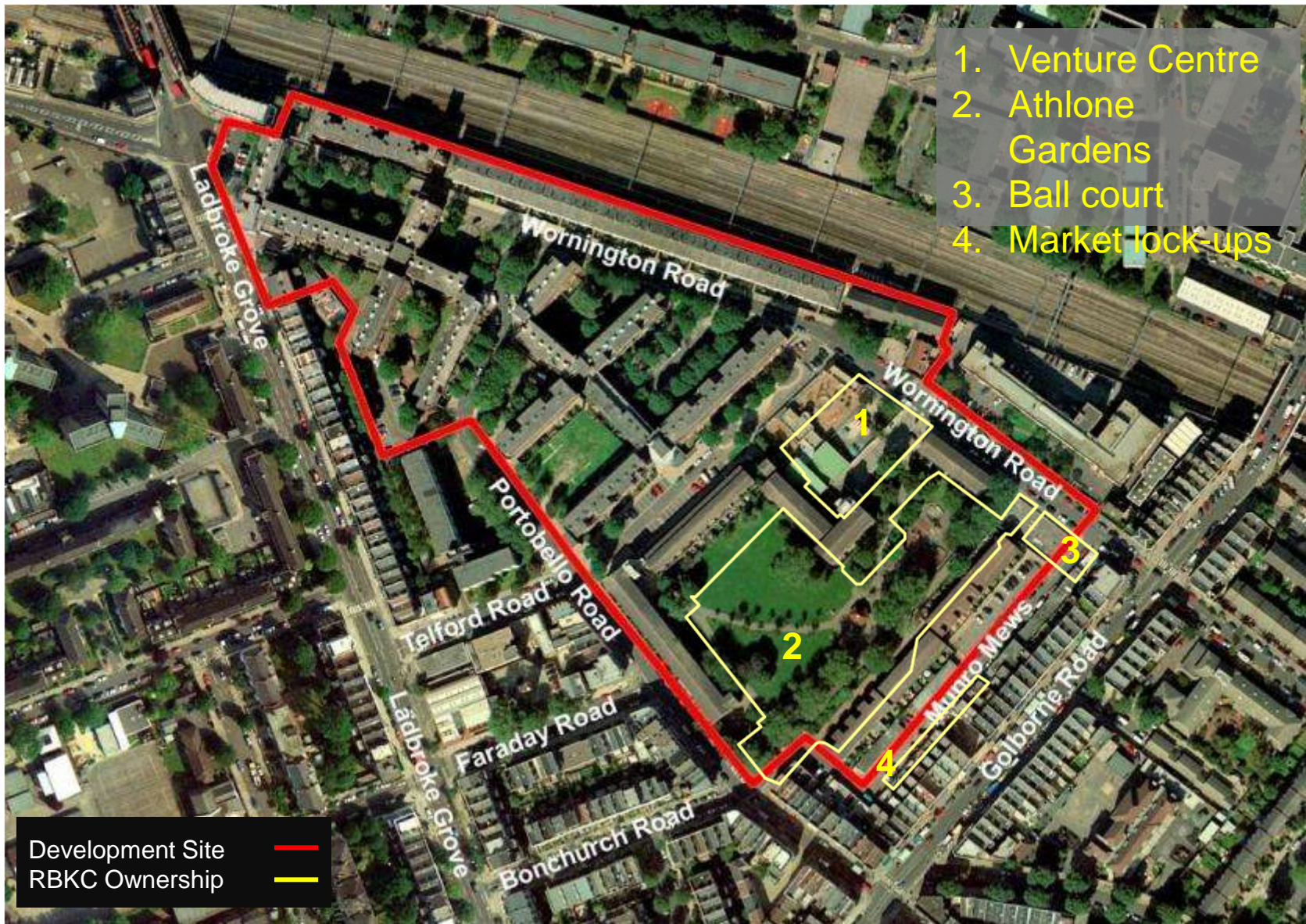


- 1. Venture Centre
- 2. Athlone Gardens
- 3. Ball court
- 4. Market lock-ups



Development Site ———
RBKC Ownership ———



Outline planning permission

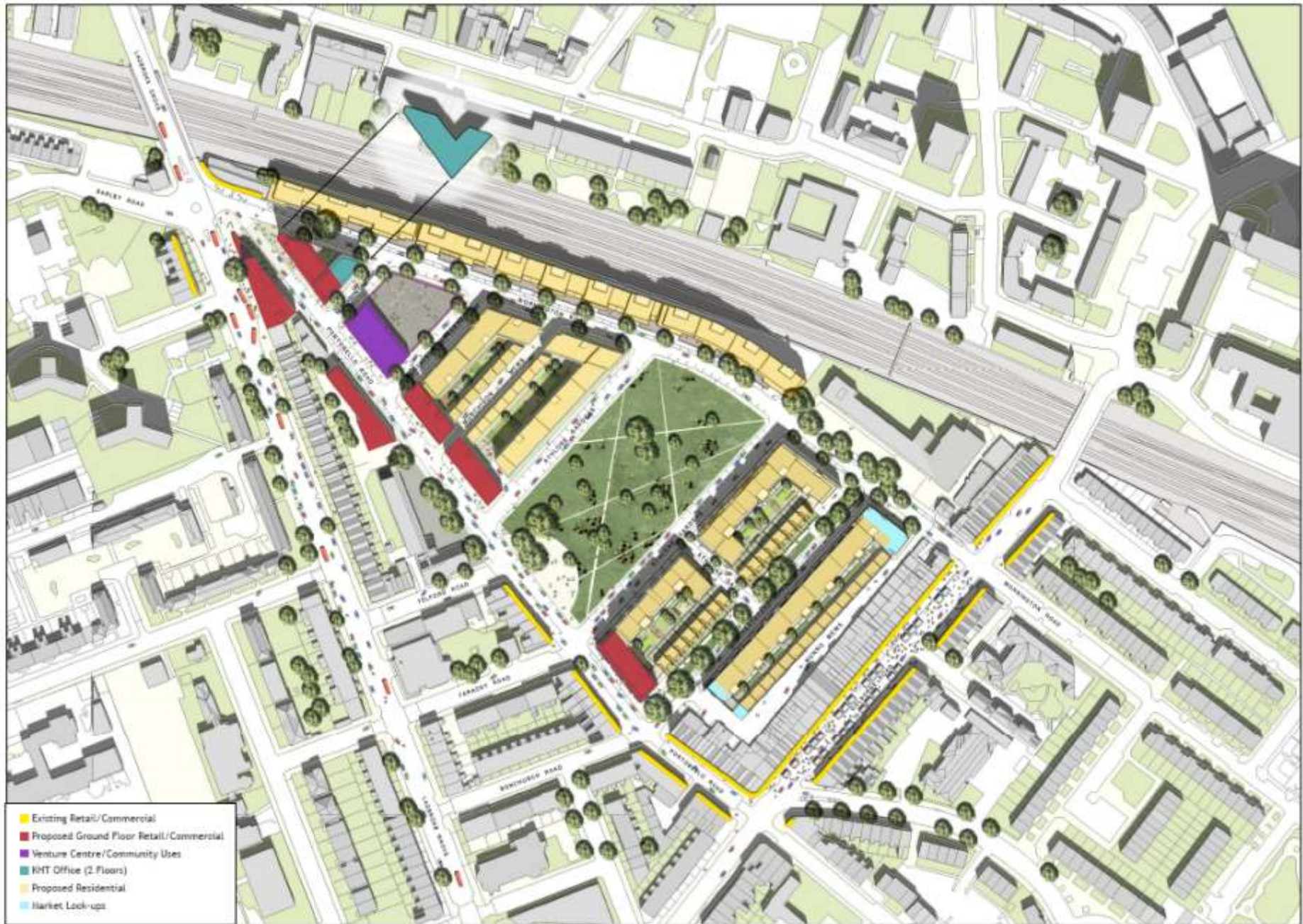
Reserved matters are:

Access, Appearance, Landscaping, Layout and Scale.

However, nonetheless, outline planning permission determines:

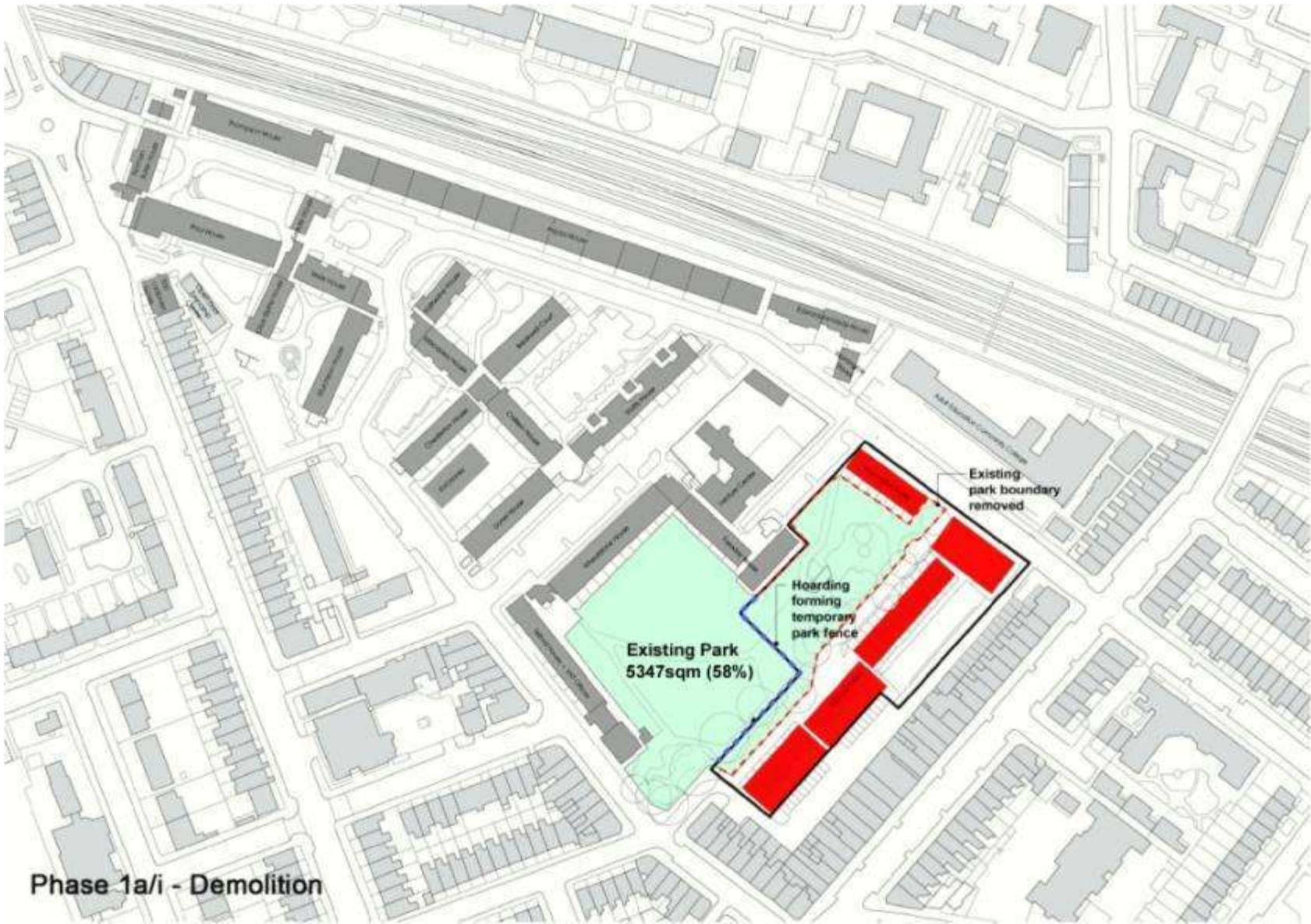
- For **layout**
the approximate location of buildings, routes and open spaces
- For **scale**
the upper and lower limit for the height, width and length of each building
- For **access**
the area or areas where access points will be situated.



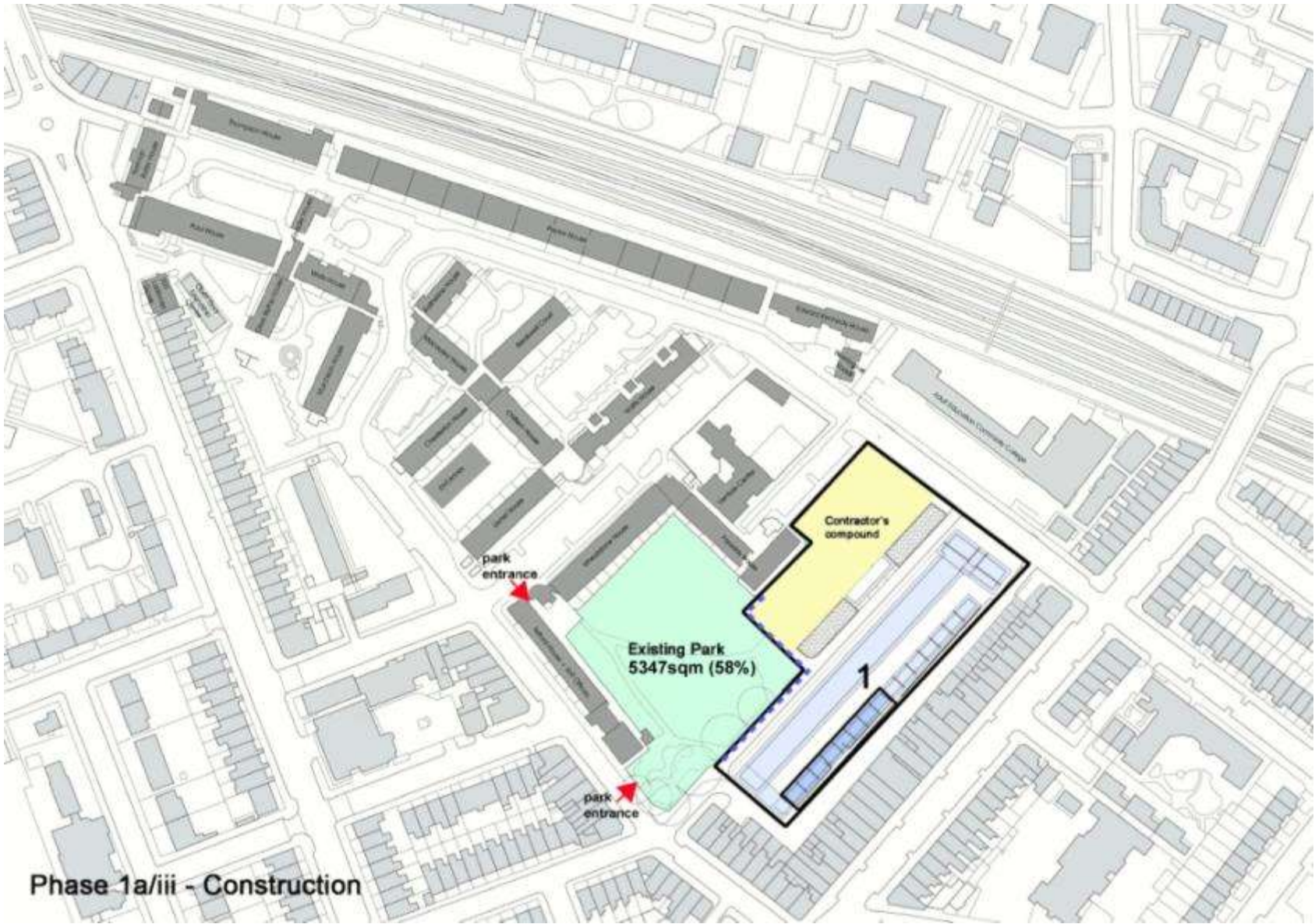


Phasing Plans

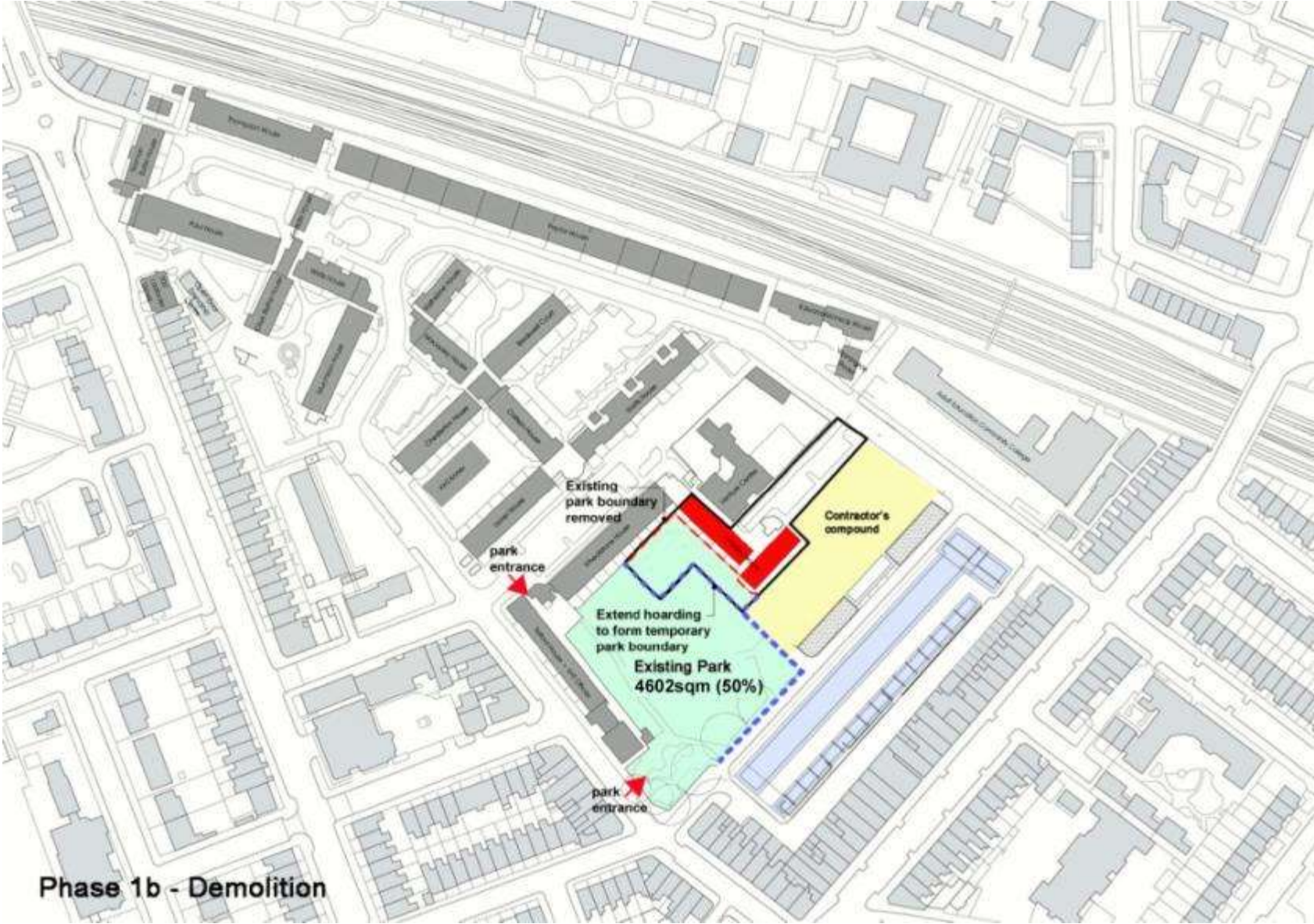




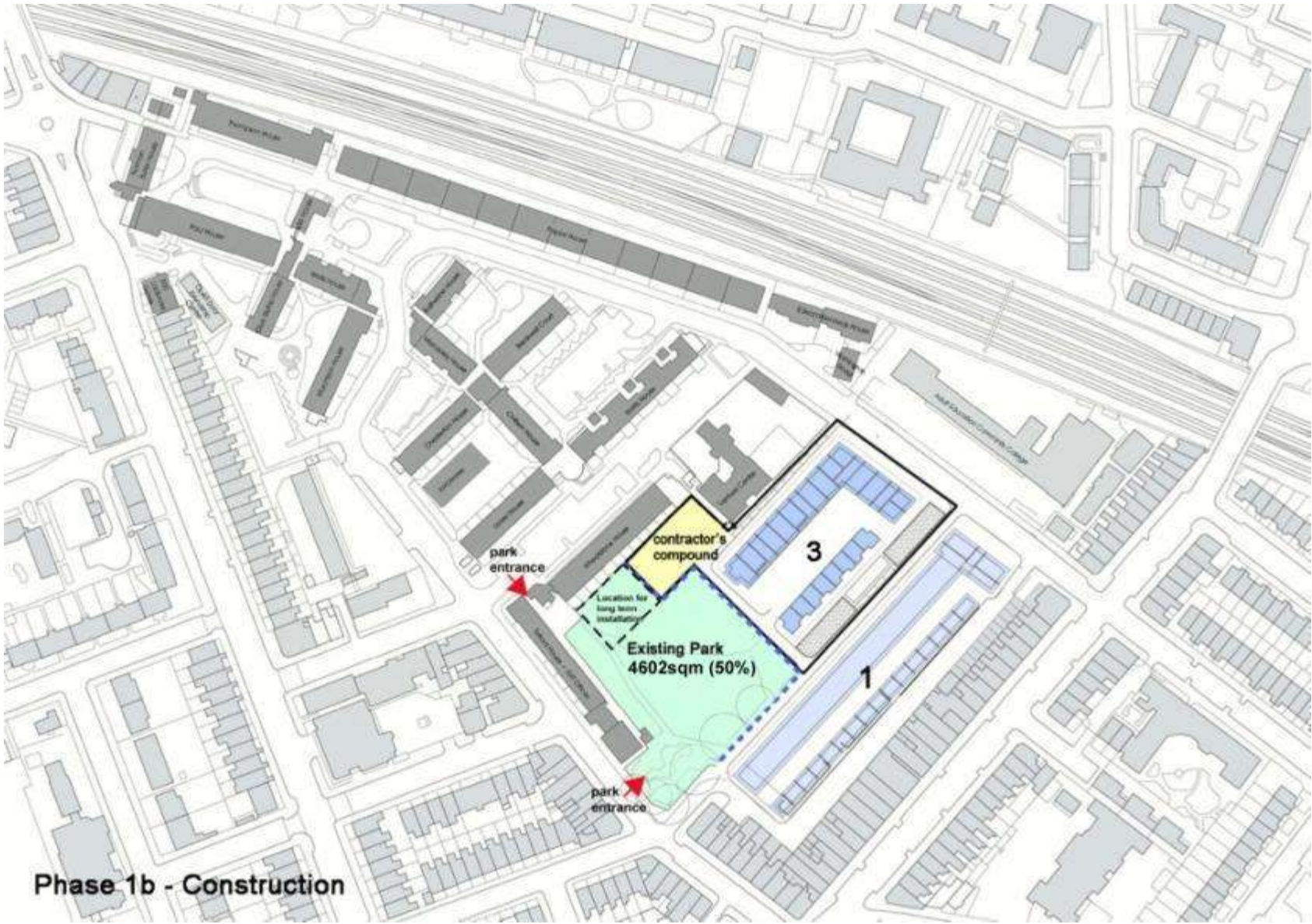
Phase 1a/i - Demolition



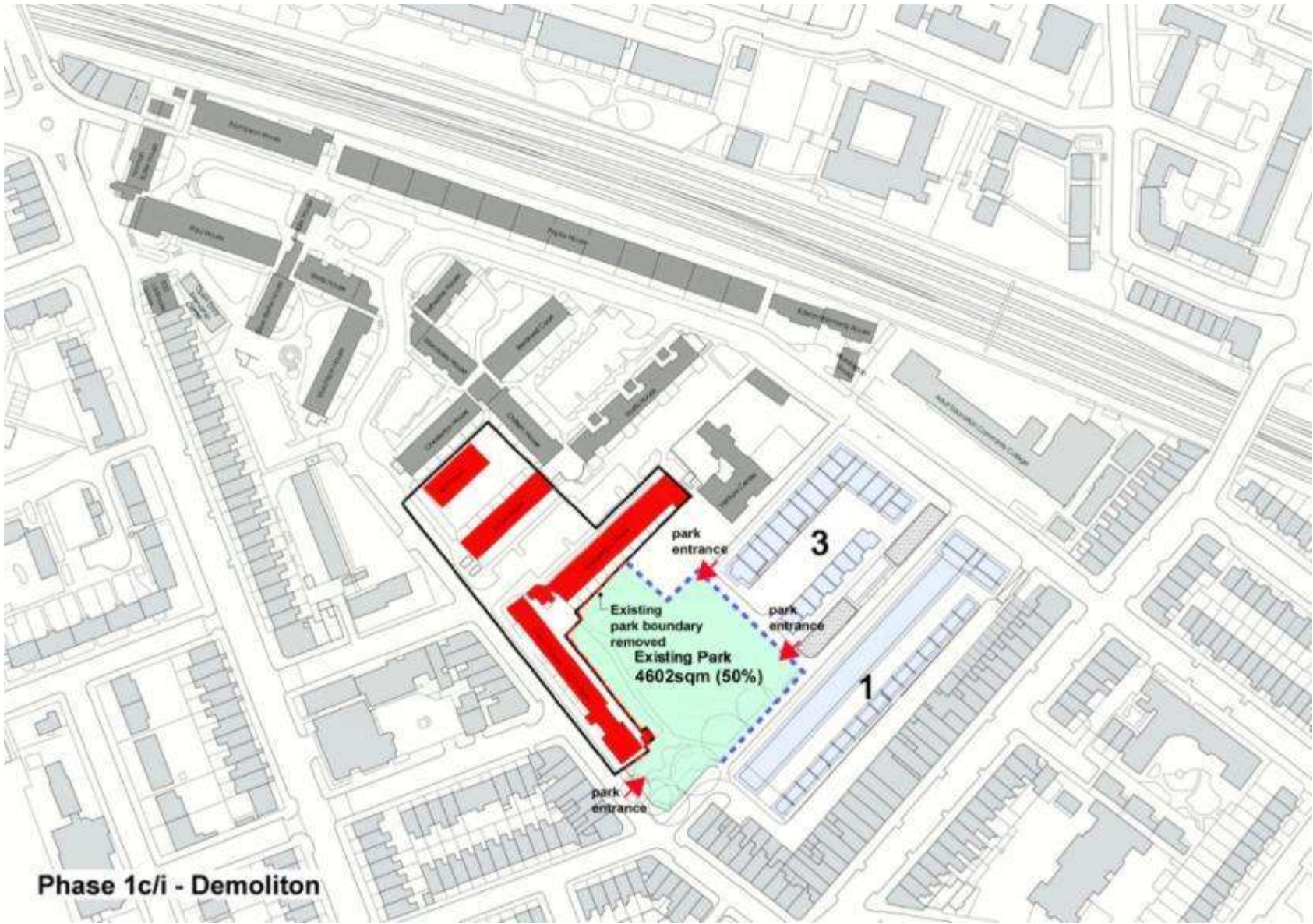
Phase 1a/iii - Construction



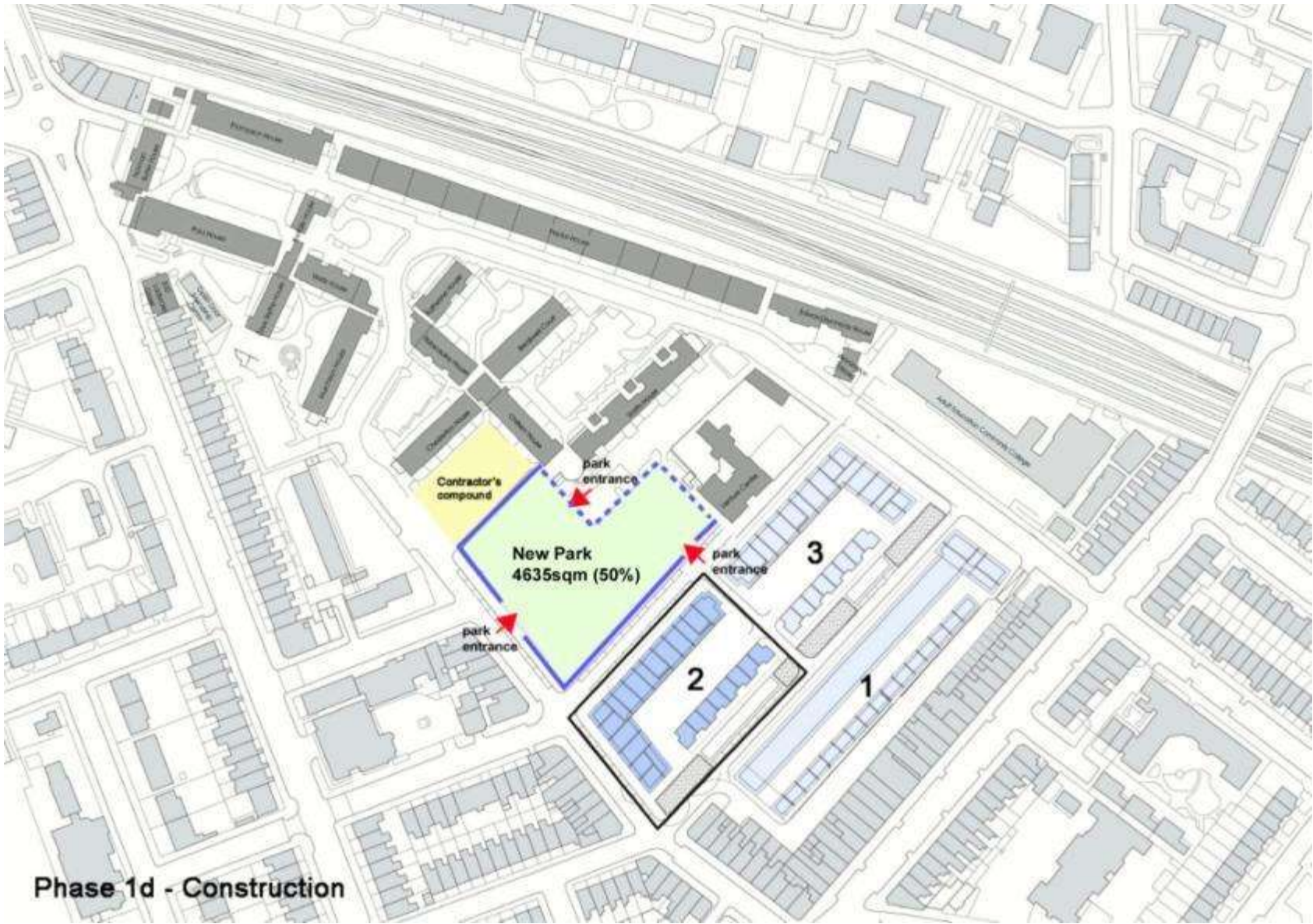
Phase 1b - Demolition



Phase 1b - Construction

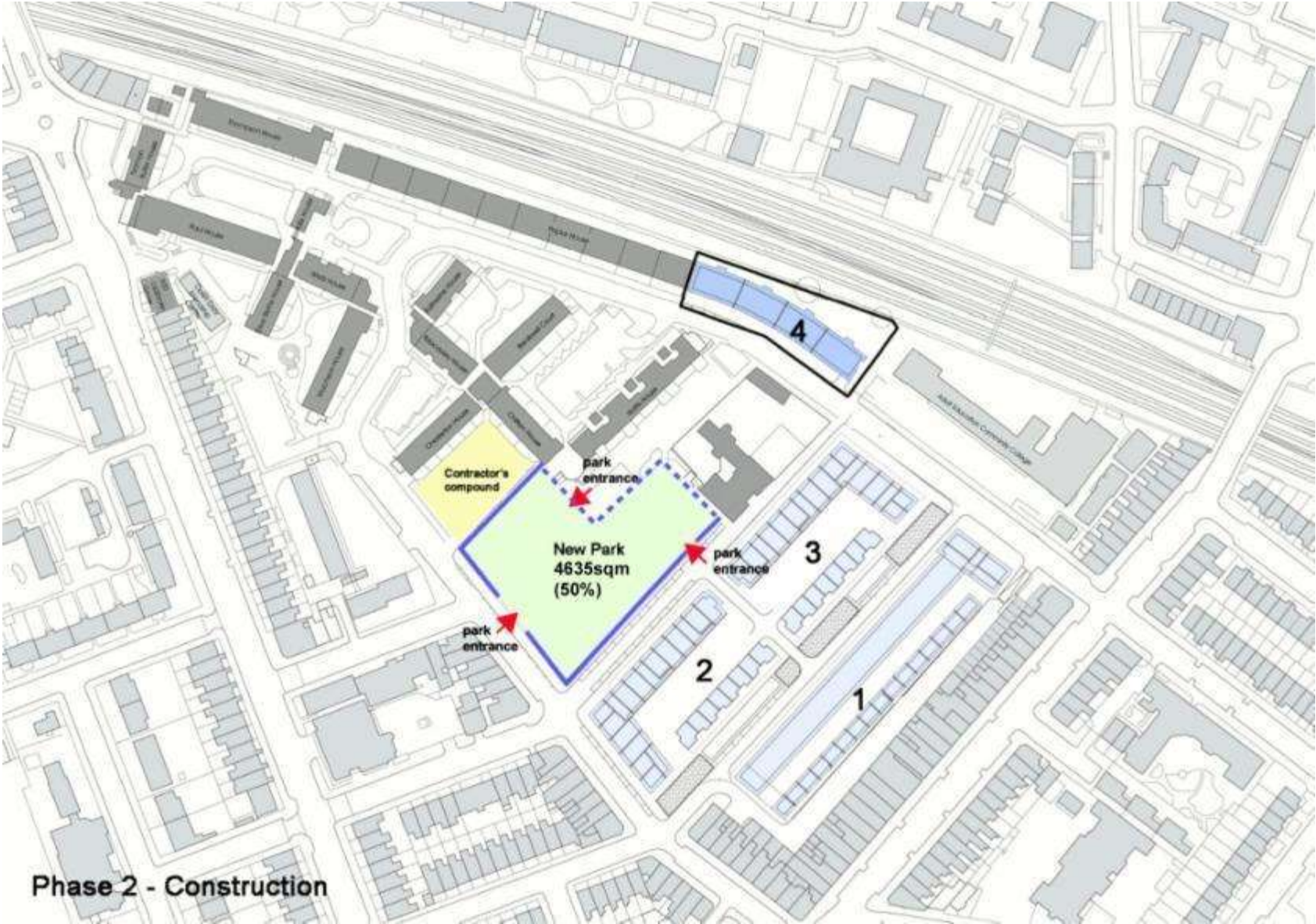


Phase 1c/i - Demoliton

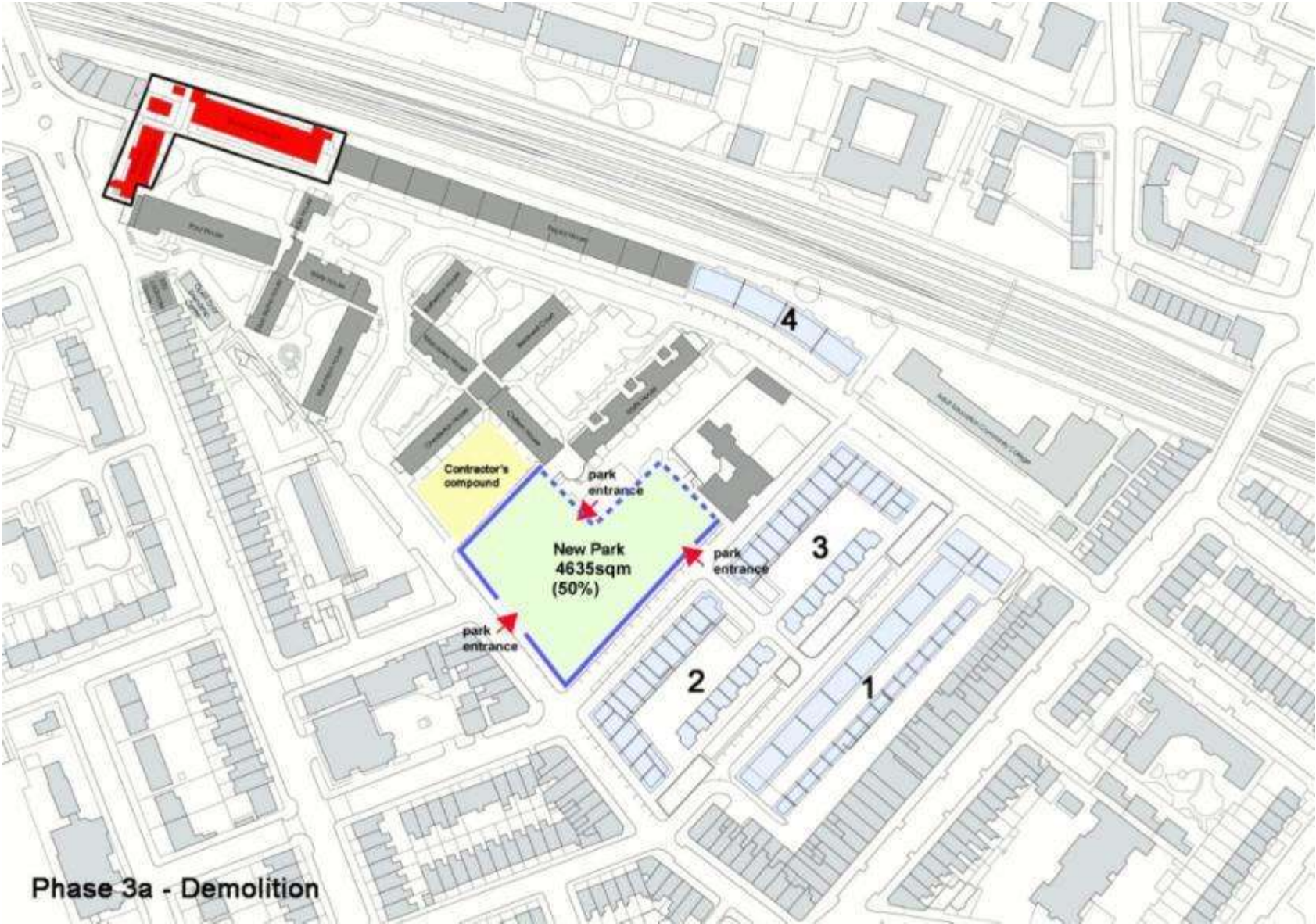


Phase 1d - Construction

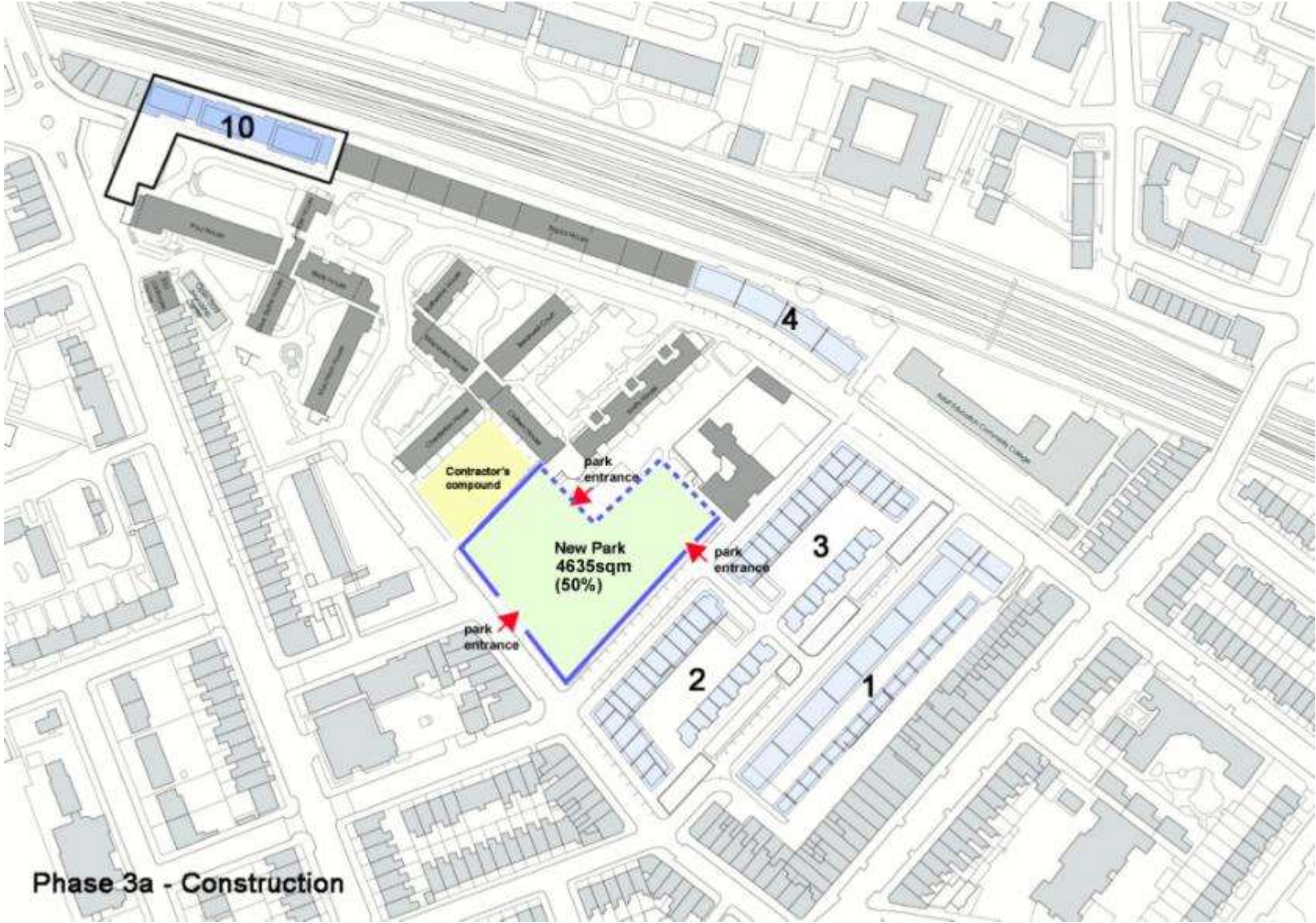




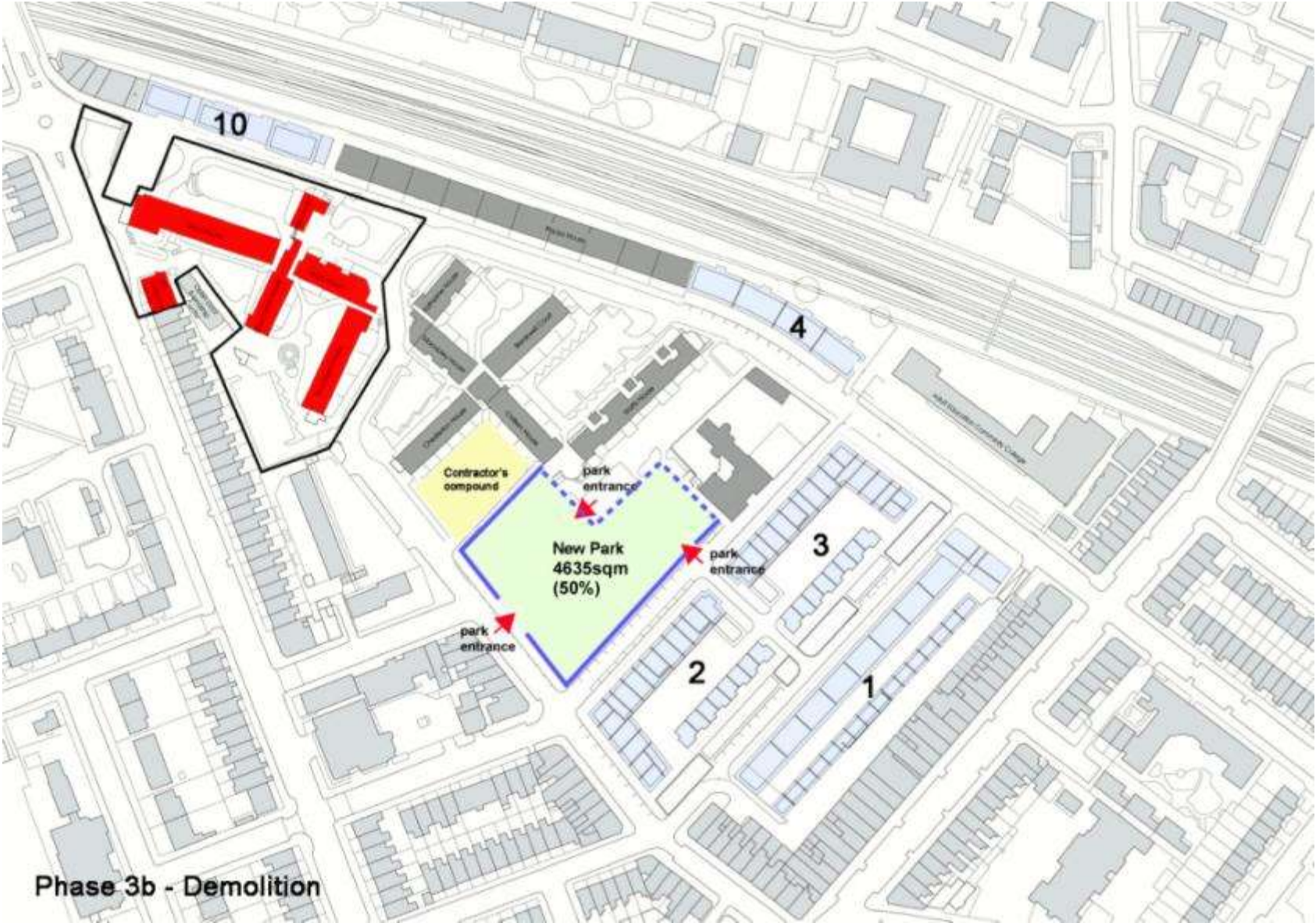
Phase 2 - Construction



Phase 3a - Demolition



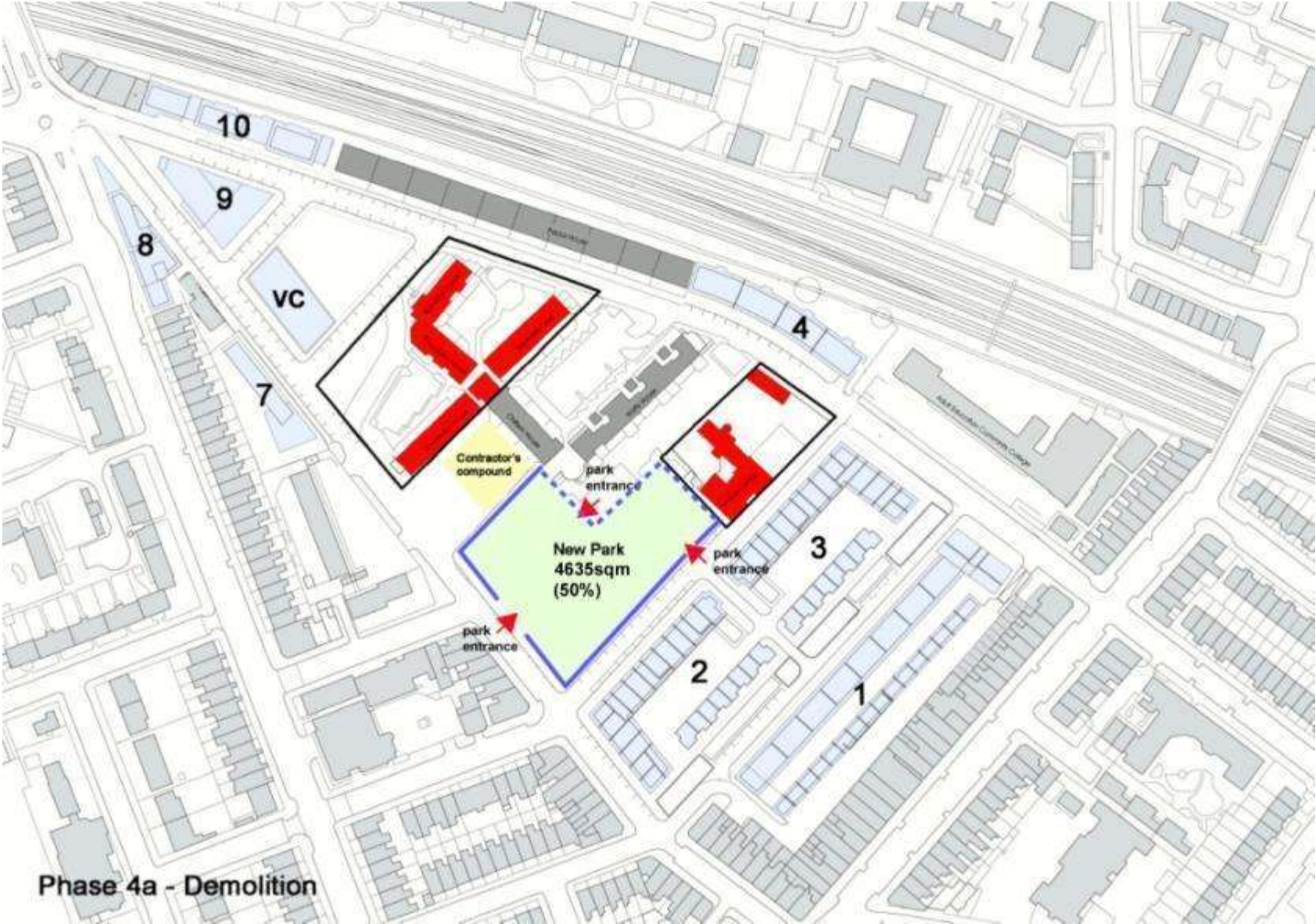
Phase 3a - Construction



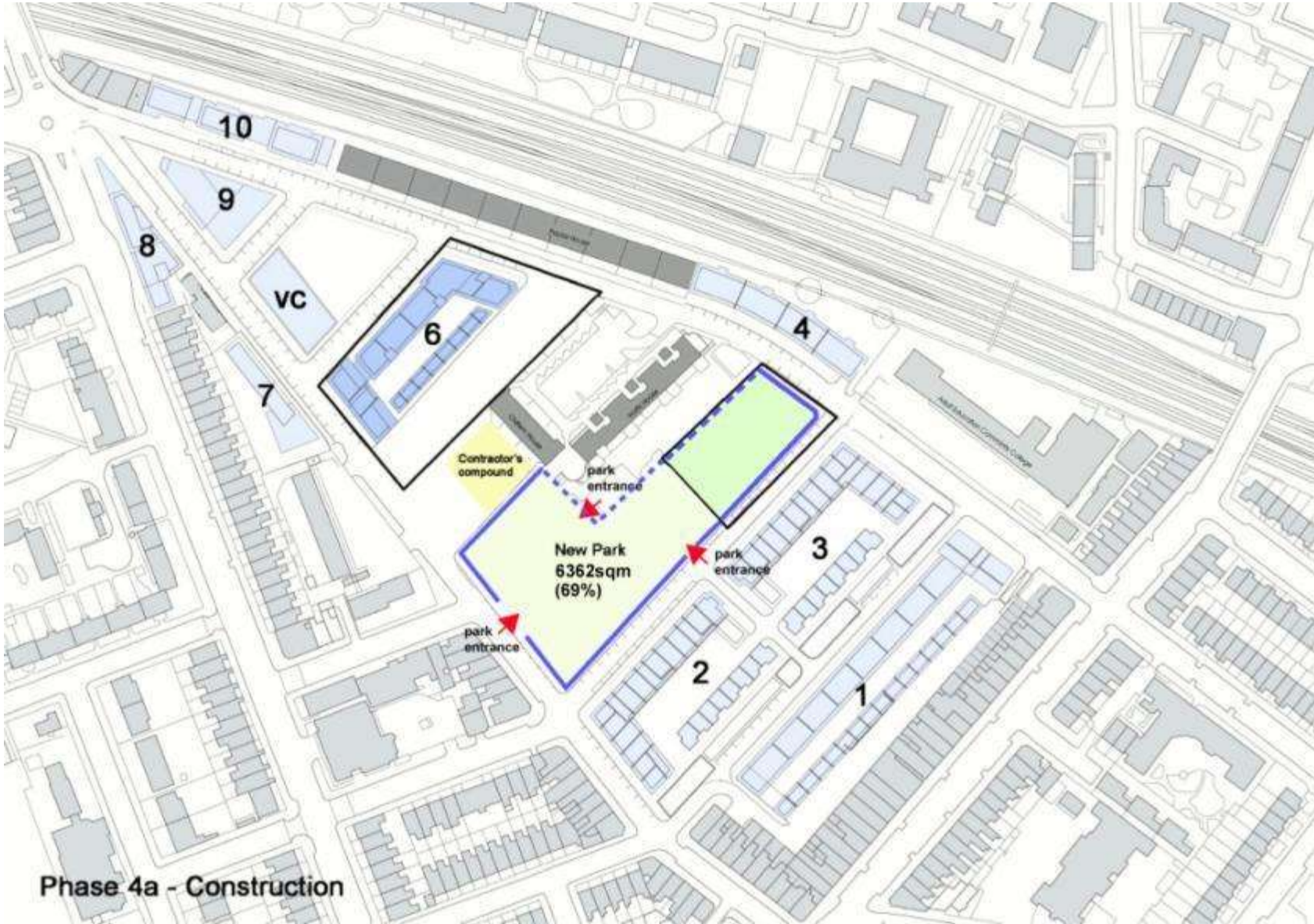
Phase 3b - Demolition



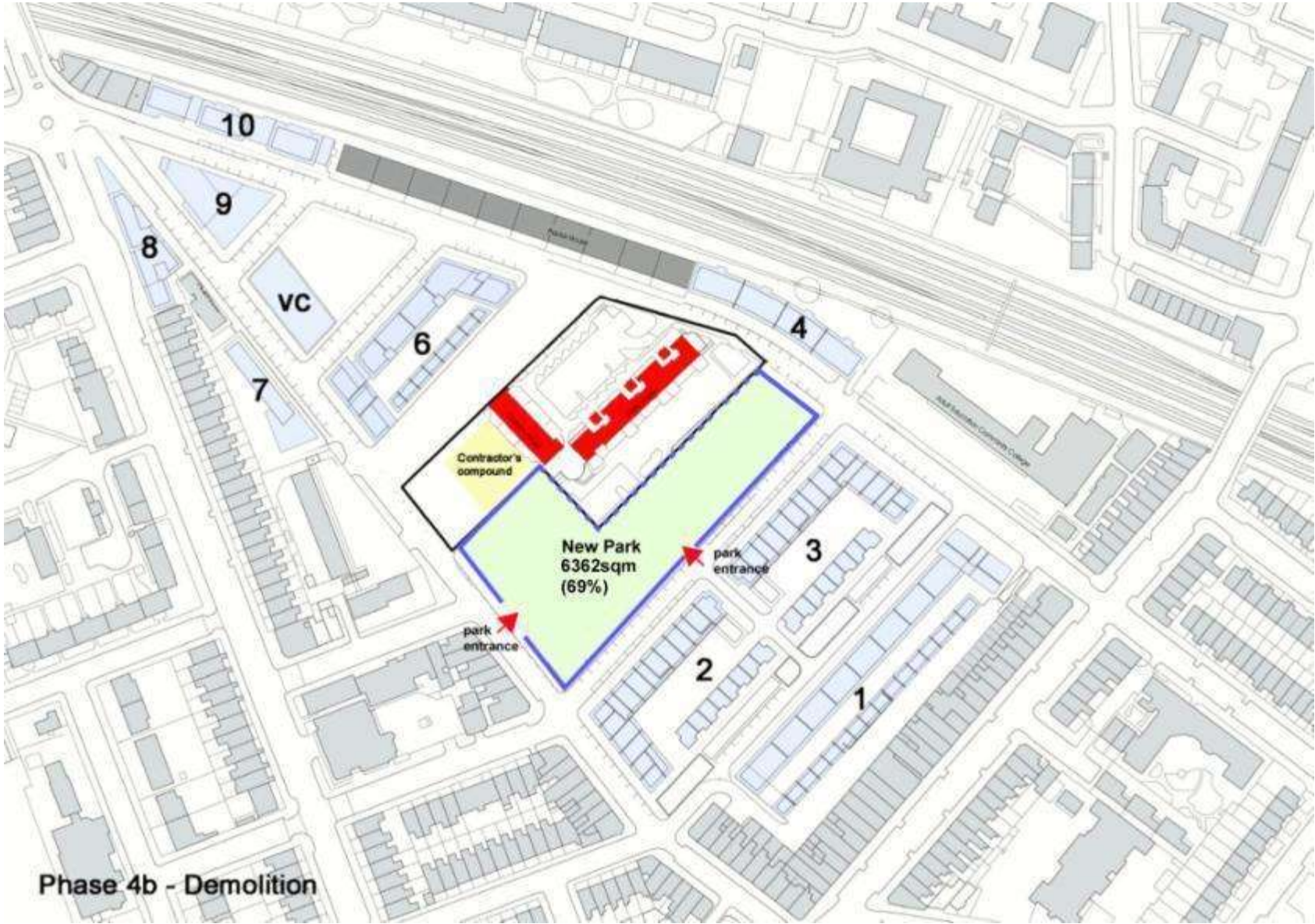
Phase 3b - Construction



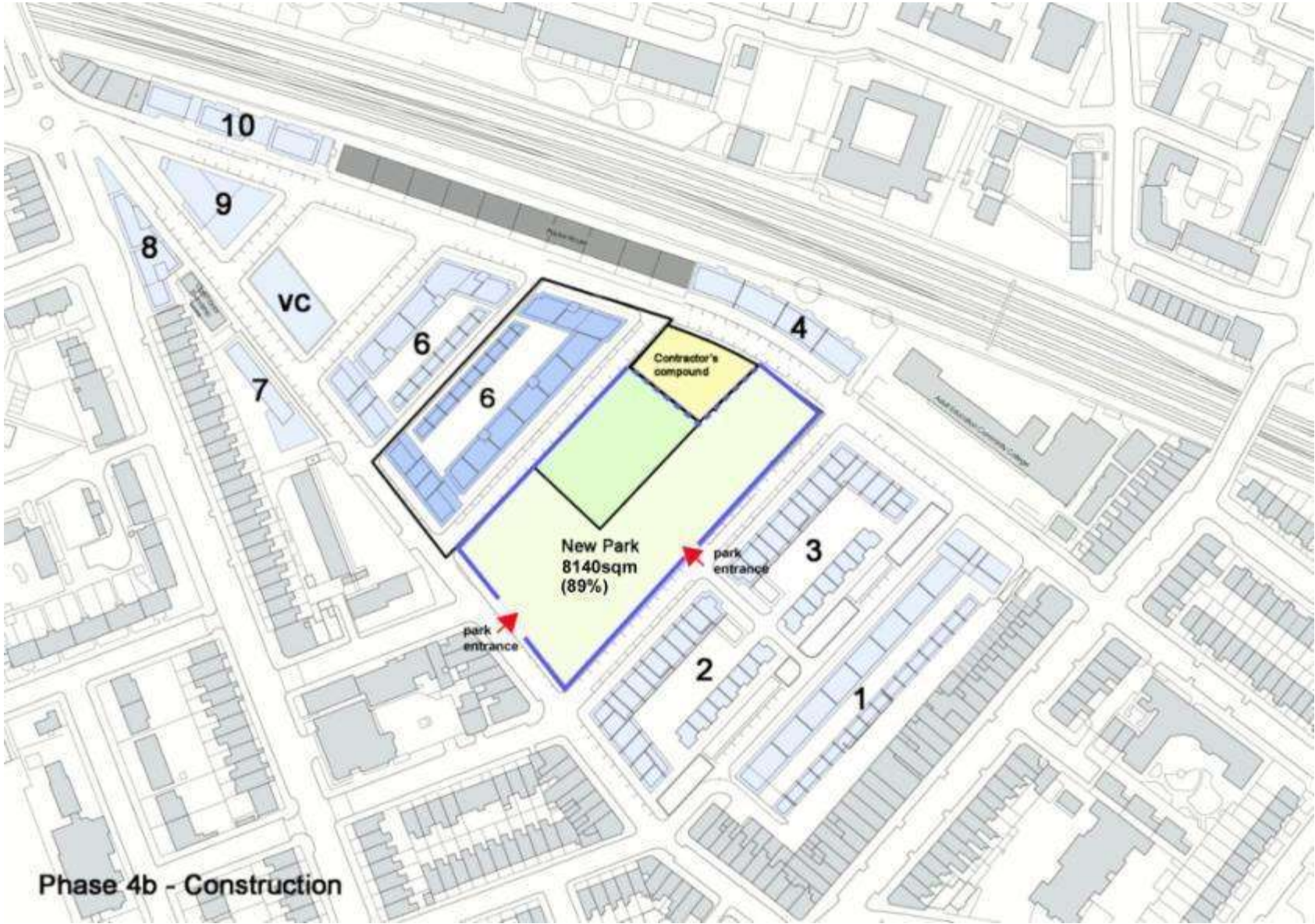
Phase 4a - Demolition



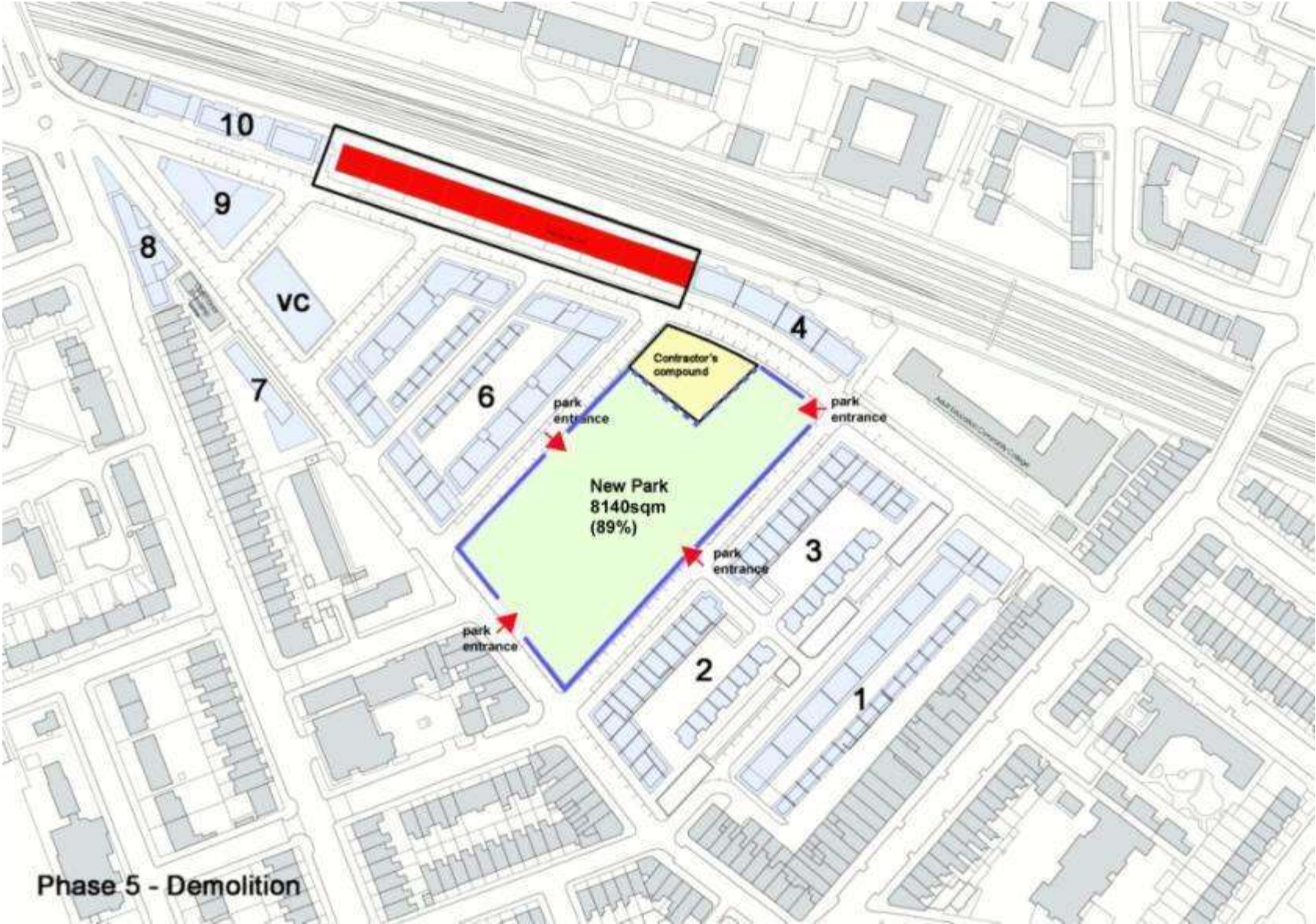
Phase 4a - Construction



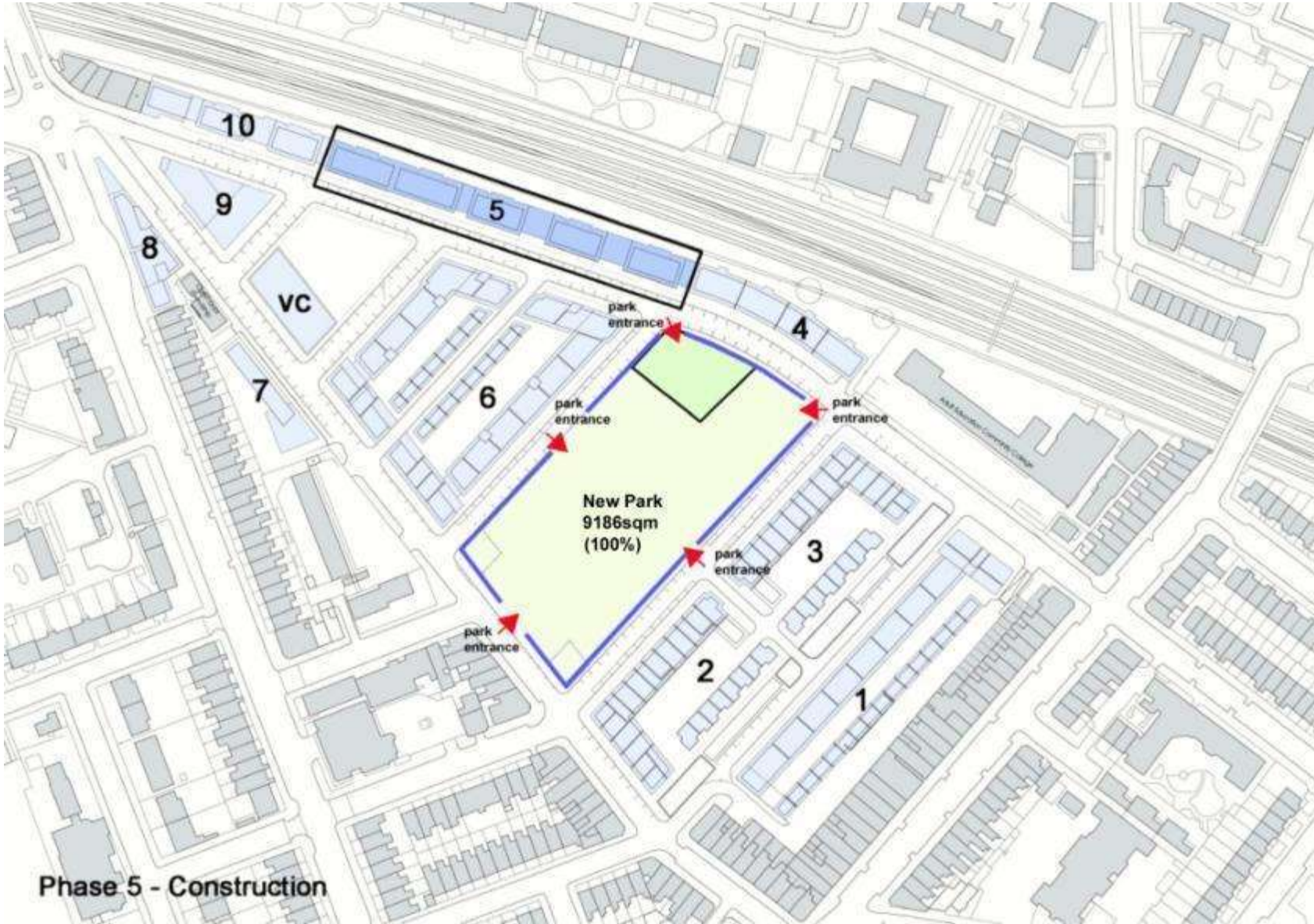
Phase 4b - Demolition



Phase 4b - Construction



Phase 5 - Demolition



Phase 5 - Construction

- 2 Storeys
- 3 Storeys
- 4 Storeys
- 5 Storeys
- 6 Storeys
- 7 Storeys
- 9 Storeys
- 15 Storeys











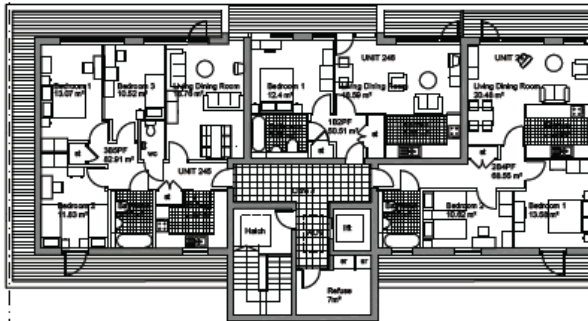




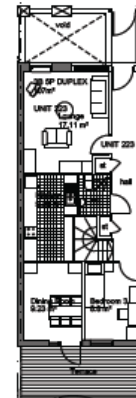
Section through Phase One



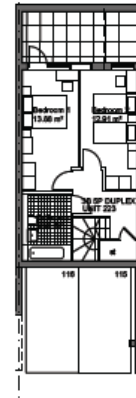
Block 2: Elevation North East (East)



Block 2: Level 0 Floor Plan

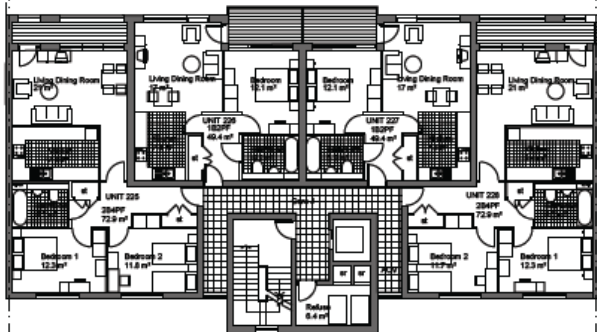


Block 1: Typical Ground Floor Mezzanine (Upper)



Block 1: Typical Ground Floor Mezzanine (Lower)

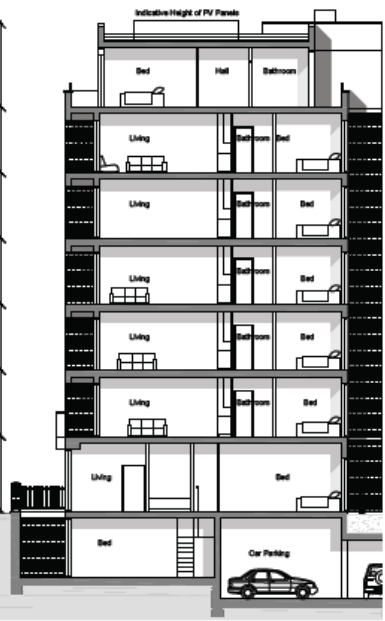
- MATERIALS SCHEDULE**
- ① LONDON STOCK BRICK FACING BRICK TYPE 1
 - ② ALUMINIUM EXTERIOR FRAMES WITH COMPOSITE WINDOW, COLOUR DARK GREY
 - ③ ALUMINIUM CLADDING COLOUR TO MATCH WINDOW FRAME
 - ④ VERTICAL TIMBER PANEL ABRASE DOOR
 - ⑤ TIMBER PANEL PAD 24 ENTRANCE DOOR
 - ⑥ PROTECTIVE BAY WINDOW WITH ZINC DENTAL DARK GREY WINDOW FRAMES
 - ⑦ LIGHTWEIGHT VENTILATED ZINC CLADDING COLOUR DARK GREY
 - ⑧ BALUSTRADE DARK GREY COLOUR-COATED ALLOY SUPPORTS WITH GLASSING BELOW
 - ⑨ ZINC STANDING SEAM HAWK ROOF
 - ⑩ BLACK CAST IRON RAINWATER DOWNPIPE
 - ⑪ LONDON STOCK BRICK FACING BRICK TYPE 1
 - ⑫ RECESSED BRICKWORK
 - ⑬ ALUMINIUM INSULATED PANELS, COLOUR DARK GREY
 - ⑭ LOWWE, COLOUR TO MATCH WINDOW FRAME
 - ⑮ SMOOTH ACRYLIC RENDER, COLOUR OFF WHITE
 - ⑯ RECAST/SETTLED STONE (PORTLAND STONE COLOUR)
 - ⑰ BLACK FACING BRICK
 - ⑱ BALCONY - DARK GREY ALUMINIUM LAMINATED GLASS
 - ⑲ BALCONY - GALVANISED STEEL POSTS, BLACK
 - ⑳ SMOOTH ACRYLIC RENDER, COLOURED



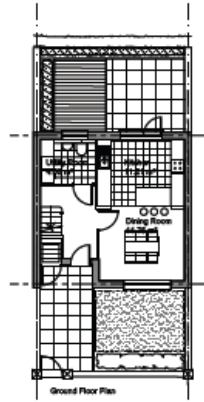
Block 2: Typical Upper Floor Plan



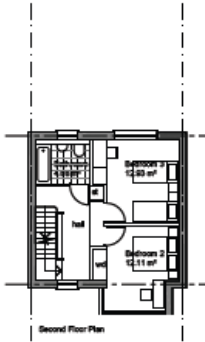
Block 2: Elevation South East



Block 2: Section North East



Ground Floor Plan



Second Floor Plan



First Floor Plan



Third Floor Plan



Block 2 Rear Elevation of Townhouse



Block 2 Section Town Houses

MATERIALS SCHEDULE

- 1 LONDON STOCK BRUFF FACING BRICK TYPE 1
- 2 LONDON STOCK BRUFF FACING BRICK TYPE 2
- 3 ALUMINIUM / TIMBER JNT COMPOSITE WINDOW, COLOUR DARK GREY
- 4 ALUMINIUM CLADDING, COLOUR TO MATCH WINDOW FRAME
- 5 VERTICAL PANEL, TIMBER GRAINE DOOR
- 6 TIMBER PANEL, PAD IN ENTRANCE DOOR
- 7 PROJECTING BAY WINDOW WITH ZINC DETAIL, DARK GREY WINDOW FRAMES
- 8 LIGHTWEIGHT VENTILATED ZINC CLADDING, COLOUR DARK GREY
- 9 BALLTRAP: DARK GREY COLOUR-COATED ALLOY SUPPORTS WITH GLAZING BELOW
- 10 BALLTRAP: DARK GREY COLOUR-COATED FLAT POSTS WITH IN-SET SAFETY GLAZING
- 11 ZINC STACKING SEDUM ROOF
- 12 BLACK CAST IRON RAINWATER DOWNPIPE
- 13 LONDON STOCK BRUFF FACING BRICK TYPE 3
- 14 RECESSED BRICKWORK
- 15 ALUMINIUM INSULATED PANEL, COLOUR DARK GREY
- 16 LOUIRE, COLOUR TO MATCH WINDOW FRAME
- 17 SMOOTH ACRYLIC RENDER, COLOUR OFF WHITE
- 18 RECONSTITUTED STONE, PORTLAND STONE COLOUR
- 19 BLACK FACING BRICK

TYPICAL Private

TYPE 1B

TYPE 1

TYPE 1

TYPE 1

TYPE 1

TYPE 1

TYPE 2

TYPE 1A

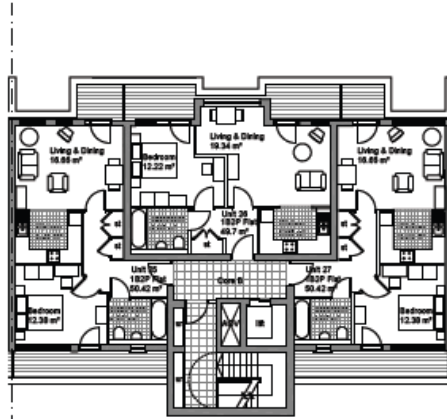
TYPE 1A



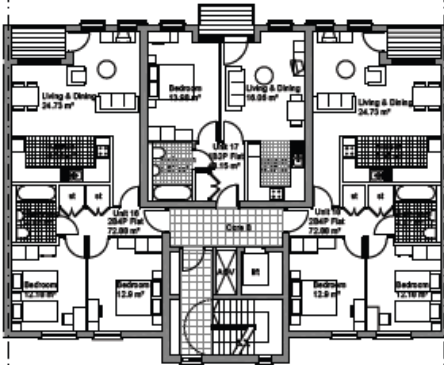
Block 2 Elevation Town Houses South East



Block 1: Elevation North West



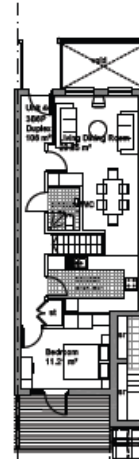
Block 1: Level 4 Floor Plan



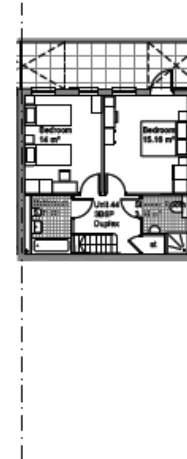
Block 1: Typical Upper Floor Plan (Level 1.2.3)



Block 1: Typical Ground Floor Materials (Upper)



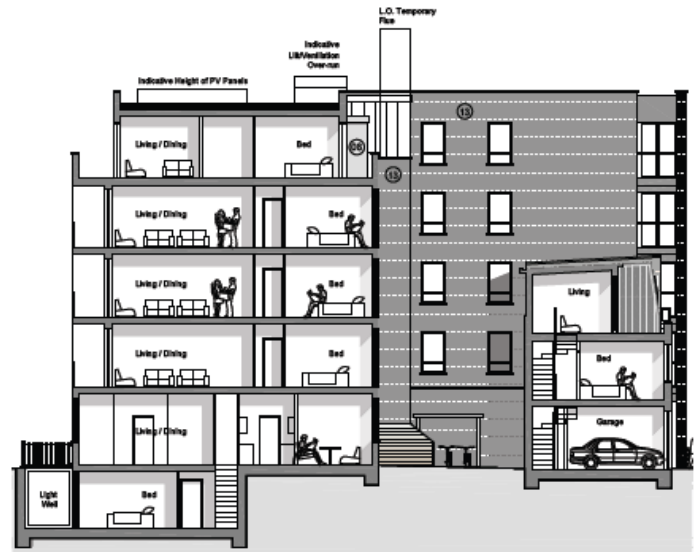
Block 1: Typical Ground Floor Materials (Upper)



Block 1: Typical Ground Floor Materials (Lower)

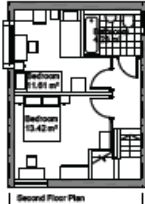
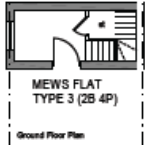
MATERIALS SCHEDULE

- 1 LONDON STOCK BUFF FACED BRICK TYPE 1
- 2 LONDON STOCK BUFF FACED BRICK TYPE 2
- 3 ALUMINIUM SLIT / TRIMER NET COMPOSITE WINDOW COLOUR DARK GREY
- 4 ALUMINIUM CLADDING COLOUR TO MATCH WINDOW FRAME
- 5 VERTICAL PANEL, TIMBER GARAGE DOOR
- 6 TIMBER PANEL, PAD 24 ENTRANCE DOOR
- 7 PROJECTORS BAY WINDOW WITH ZINC DETAIL, DARK GREY WINDOWFRAMES
- 8 LIGHTWEIGHT VENTILATED ZINC CLADDING, COLOUR DARK GREY
- 9 BALLBEARING DARK GREY COLOUR COATED ALLOY SUPPORTS WITH SLAZRO BELOW
- 10 BALLBEARING DARK GREY COLOUR COATED FLAT PIPES WITH INSET SAFETY GLAZING
- 11 ZINC STANDING SEAM WARM ROOF
- 12 BLACK CAST IRON RAINWATER DOWNPIPE
- 13 LONDON STOCK BUFF FACED BRICK TYPE 2
- 14 RECESSED BRICKWORK
- 15 ALUMINIUM BRILLIANT PANELS COLOUR DARK GREY
- 16 LAMINE COLOUR TO MATCH WINDOWFRAME
- 17 SMOOTH ACRYLIC RENDER COLOUR OFF WHITE
- 18 RECONSTITUTED STONE (PORTLAND STONE COLOUR)
- 19 BLACK FACED BRICK
- 20 BRICKERY - DARK GREY ALUMINIUM AND GLASS
- 21 BRICKERY - SALVAGED STEEL POSTS, BLACK
- 22 SMOOTH ACRYLIC RENDER COLOURED



Block 1: Section North West

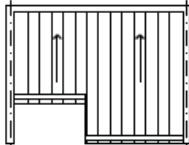
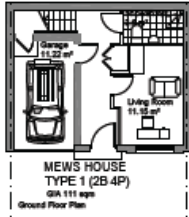
TYPE 3
Affordable



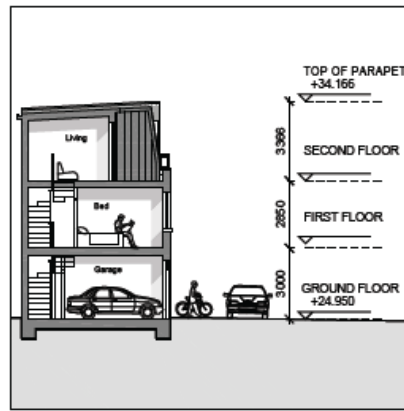
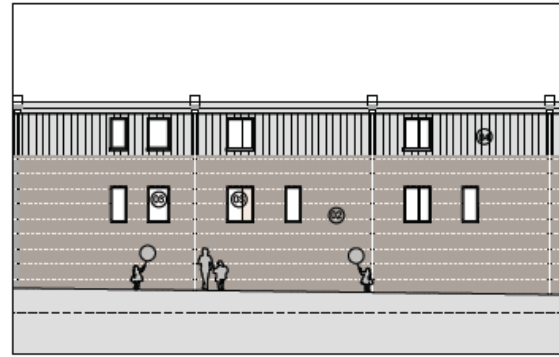
TYPE 3



TYPE 1
Private



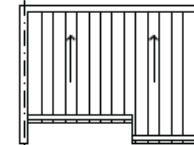
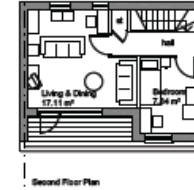
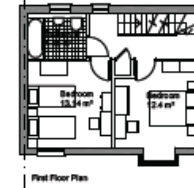
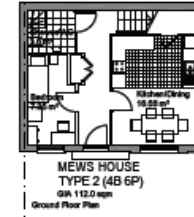
TYPE 1



MATERIALS SCHEDULE

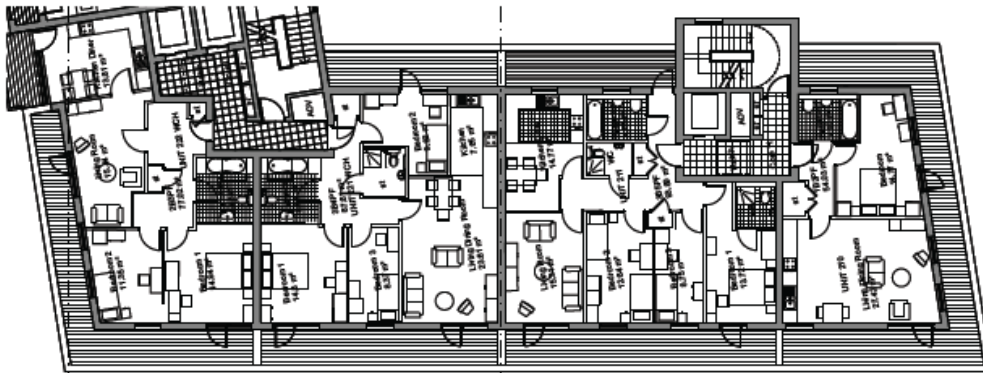
- ① LONDON STOCKLUFF FACING BRICK TYPE 1
- ② LONDON STOCKLUFF FACING BRICK TYPE 2
- ③ ALUMINIUM/STEEL/TIMBER/INT COMPOSITE WINDOW. COLOUR DARK GREY
- ④ ALUMINIUM CLADDING. COLOUR TO MATCH WINDOW FRAME
- ⑤ VERTICAL PANEL. TIMBER GARAGE DOOR
- ⑥ TIMBER PANEL. PAD 24 ENTRANCE DOOR
- ⑦ PROJECTING KEY WINDOW WITH ZINC BEZEL. DARK GREY WINDOW FRAMES
- ⑧ LIGHTWEIGHT VENTILATED ZINC CLADDING. COLOUR DARK GREY
- ⑨ BALUSTRADE: DARK GREY COLOUR-COATED ALU/ GLYP SUPPORTS WITH GLAZING BELOW
- ⑩ BALUSTRADE: DARK GREY COLOUR-COATED FLAT POSTS WITH 8-SEET SAFETY GLAZING
- ⑪ ZINC STENOUS BEAM WARM ROOF
- ⑫ BLACK CAST IRON PARAWATERDOWNPIPE
- ⑬ LONDON STOCKLUFF FACING BRICK TYPE 3
- ⑭ RECESSED BRICKWORK
- ⑮ ALUMINIUM/RELATED PANELS. COLOUR DARK GREY
- ⑯ LOUVER. COLOUR TO MATCH WINDOWFRAME
- ⑰ SMOOTH ACRYLIC RENDER. COLOUR OFF WHITE
- ⑱ RECONSTITUTED STONE (PORTLAND STONE COLOUR)
- ⑲ BLACK FACING BRICK
- ⑳ BALCONY - DARK GREY ALUMINIUM AND GLASS

TYPE 2
Affordable



TYPE 2





Block 2: Fourth Floor Level



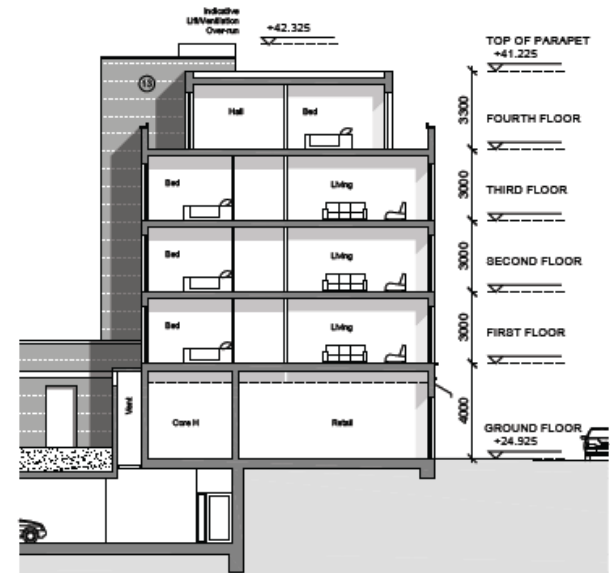
Block 2: Typical Upper Floor Level



Block 2: Devon South East

MATERIALS SCHEDULE

- 1 LONDON STOCK BUFF FACED BRICK TYPE 1
- 2 LONDON STOCK BUFF FACED BRICK TYPE 2
- 3 ALUMINIUM EXT / TRIMMER 20% COMPOSITE WINDOW COLOUR DARK GREY
- 4 ALUMINIUM CLADDING COLOUR TO MATCH WINDOWFRAME
- 5 VERTICAL PANEL, TIMBER GARAGE DOOR
- 6 TIMBER PANEL, PAS 24 ENTRANCE DOOR
- 7 PROJECTING BALY WINDOW WITH ZINC DETAIL, DARK GREY WINDOWFRAMES
- 8 LIGHTWEIGHT VENTILATED ZINC CLADDING, COLOUR DARK GREY
- 9 BALLBEARING, DARK GREY COLOUR-COATED ALLOY SUPPORTS WITH GLAZING BELOW
- 10 BALLBEARING, DARK GREY COLOUR-COATED FLAT PIGS WITH 60/20 SAFETY GLAZING
- 11 ZINC STANDING SEAM WARM ROOF
- 12 BLACK CAST IRON RAINWATER DOWNPIPE
- 13 LONDON STOCK BUFF FACED BRICK TYPE 1
- 14 RECESSED BRICKWORK
- 15 ALUMINIUM INSULATED PANELS, COLOUR DARK GREY
- 16 LOUVER, COLOUR TO MATCH WINDOW FRAME
- 17 SMOOTH ACRYLIC RENOVIC, COLOUR OFF WHITE
- 18 RECONSTITUTED STONE (PORTLAND STONE COLOUR)
- 19 BLACK FACED BRICK
- 20 BALCONY - DARK GREY ALUMINIUM AND GLASS
- 21 BALCONY - GALVANISED STEEL POSTS, BLACK
- 22 SMOOTH ACRYLIC RENOVIC COLOURED



Block 2: Elevation South West

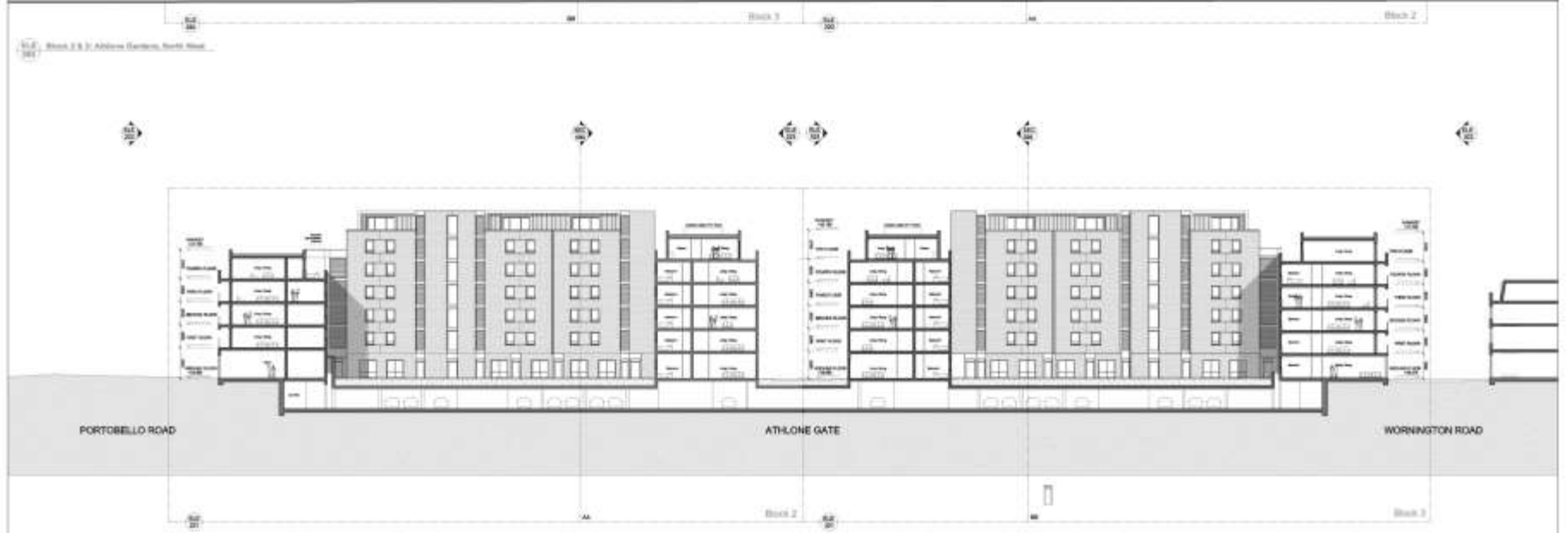


- 2 Storeys
- 3 Storeys
- 4 Storeys
- 5 Storeys
- 6 Storeys
- 7 Storeys
- 9 Storeys
- 15 Storeys





Block 2 & 3, Athlone Gardens, North West



Block 2 & 3, Athlone Gardens, South East

Date / Rev / Revision / Author / Checker
 30.11.20 / 1 / 1 / 1 / 1 / 1

WORNINGTON GREEN
 PHASE 1 - PLANNING SUBMISSION

no. 440871_2.1_0000 no. Blocks 2 & 3:
 scale 1:200 Athlone Gardens (NW & SE)
 no. 30.11.20 no. 0 Elevations / Sections





- 2 Storeys
- 3 Storeys
- 4 Storeys
- 5 Storeys
- 6 Storeys
- 7 Storeys
- 9 Storeys
- 15 Storeys





Womington Road Elevation



Portobello Road Elevation



Site Section



Phase 1 Section



- 2 Storeys
- 3 Storeys
- 4 Storeys
- 5 Storeys
- 6 Storeys
- 7 Storeys
- 9 Storeys
- 15 Storeys





- 2 Storeys
- 3 Storeys
- 4 Storeys
- 5 Storeys
- 6 Storeys
- 7 Storeys
- 9 Storeys
- 15 Storeys





Indicative South West Street Elevation - Ladbrooke Grove









- 2 Storeys
- 3 Storeys
- 4 Storeys
- 5 Storeys
- 6 Storeys
- 7 Storeys
- 9 Storeys
- 15 Storeys





Indicative South West Street Elevation - Worrington Road



Indicative South West Street Elevation - Portobello Road



Indicative South West Street Elevation - Ladbrooke Grove





Womington Road Elevation



Portobello Road Elevation



Site Section

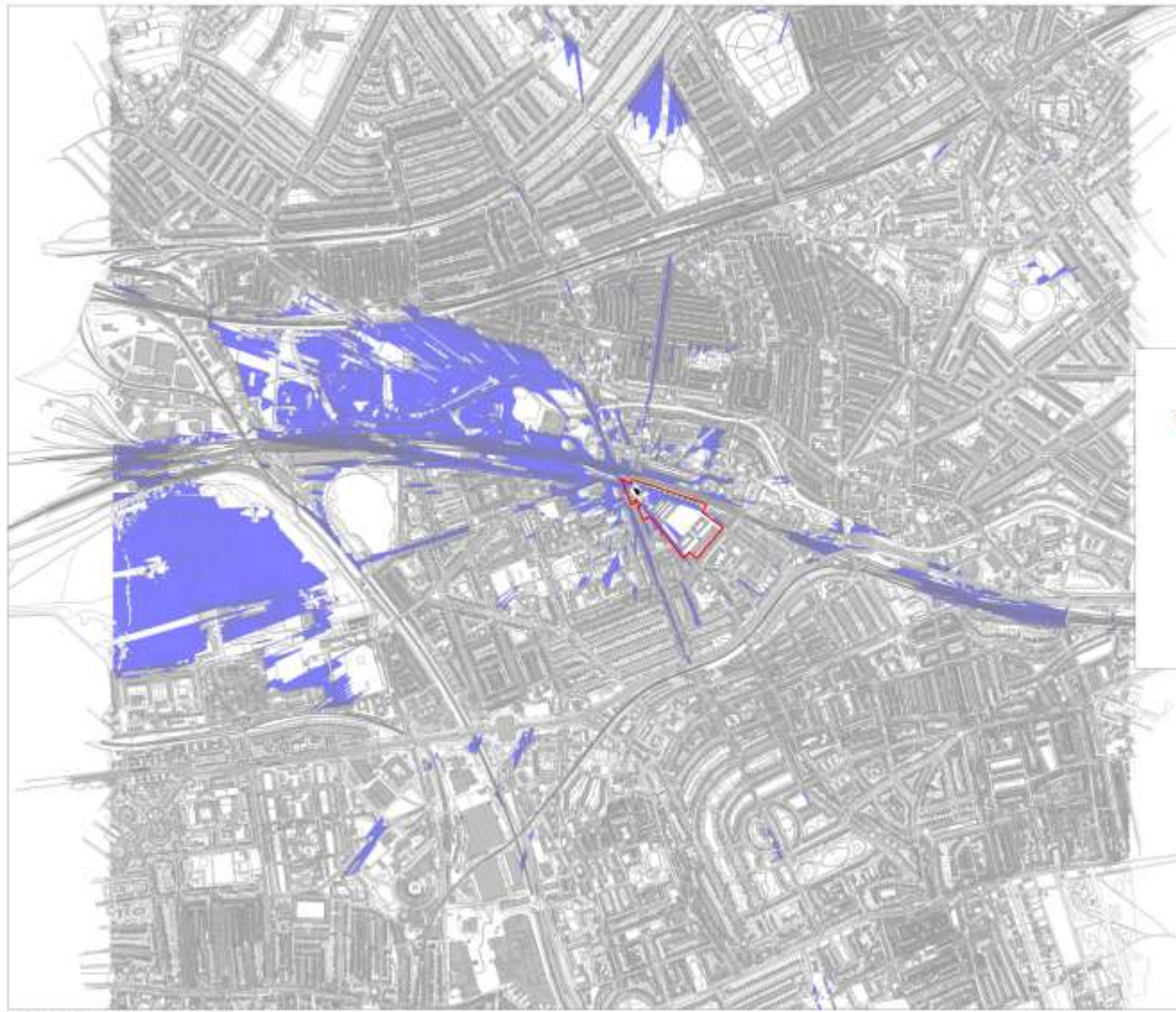


Phase 1 Section



- 2 Storeys
- 3 Storeys
- 4 Storeys
- 5 Storeys
- 6 Storeys
- 7 Storeys
- 9 Storeys
- 15 Storeys





notes

1. Do not scale the drawing. Check from figure and dimensions only.
2. No insertion from the design unless on the drawing is allowed without Campbell Reith prior permission in writing.
3. All work is to be in accordance with the relevant specifications, subject to Campbell Reith and design team's approval. Details to be drawn in accordance with the current standards.

UKMap copyright by The GeoInformation Group
 2818 Louisa Pl., #1007 (11011)
 License Expiry Date: 1/31/11

UKMap
 Mapping professionals

Legend

■ Top of building (71.6m AOD) visible
 Notes: views are assessed from 1.0m above ground level
 Maximum height used are based upon Parameter File
 ADD01_2.1_1004.rvt



Ref	Information/revision	DDP 10	04
1	Issue for	10/10/10	04
2	Issue for	10/10/10	04

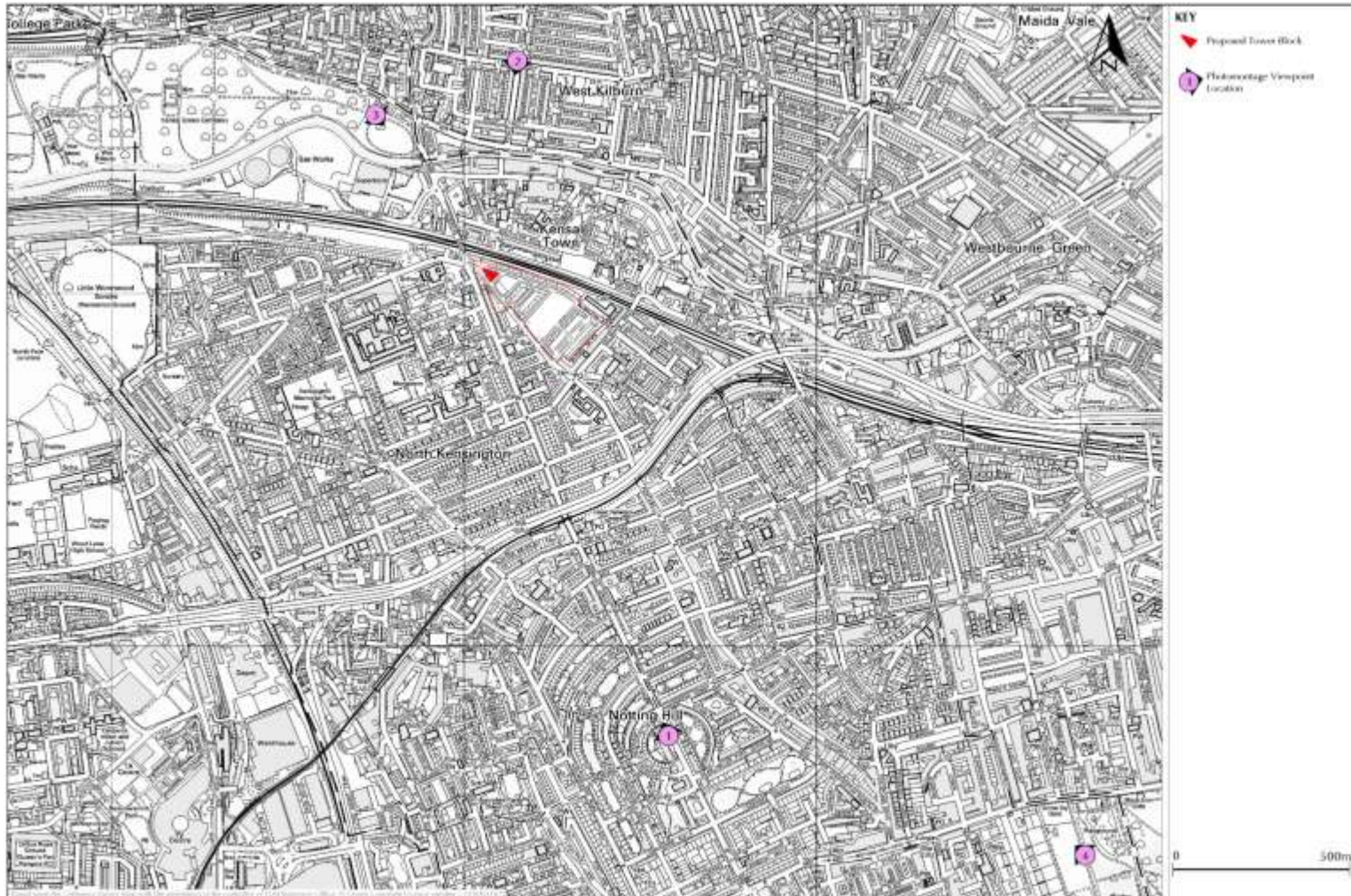
CampbellReith
 consulting engineers

LONDON: 020 7240 1100 • MANCHESTER: 0161 270 2000
 REDHILL: 01737 761 500 • BIRMINGHAM: 0121 654 9300
 BRISTOL: 0117 910 1000 • www.campbellreith.com

Job Title: **Worlington Green Estate**
 Client: **Kensington Housing Trust**

ADD1:
Zone of Visual Influence

Job No:	070732	Scale:	1:10000000	Date:	Jan 2010	Drawn by:	SH	Checked by:	TW
Proj No:	02/006	File No:	0200 - 0000 - 00000000	Revision:	0				





EXISTING VIEW 1
View from Ladbroke Grove looking north towards
the site.





EXISTING VIEW 2
View from Kensal Green Cemetery looking south
east towards the site



PHOTOMONTAGE 2
View from Kensal Green Cemetery looking south
east towards the site

KEY
 — Proposed Tower (Block 9)
 — Other Proposed Buildings

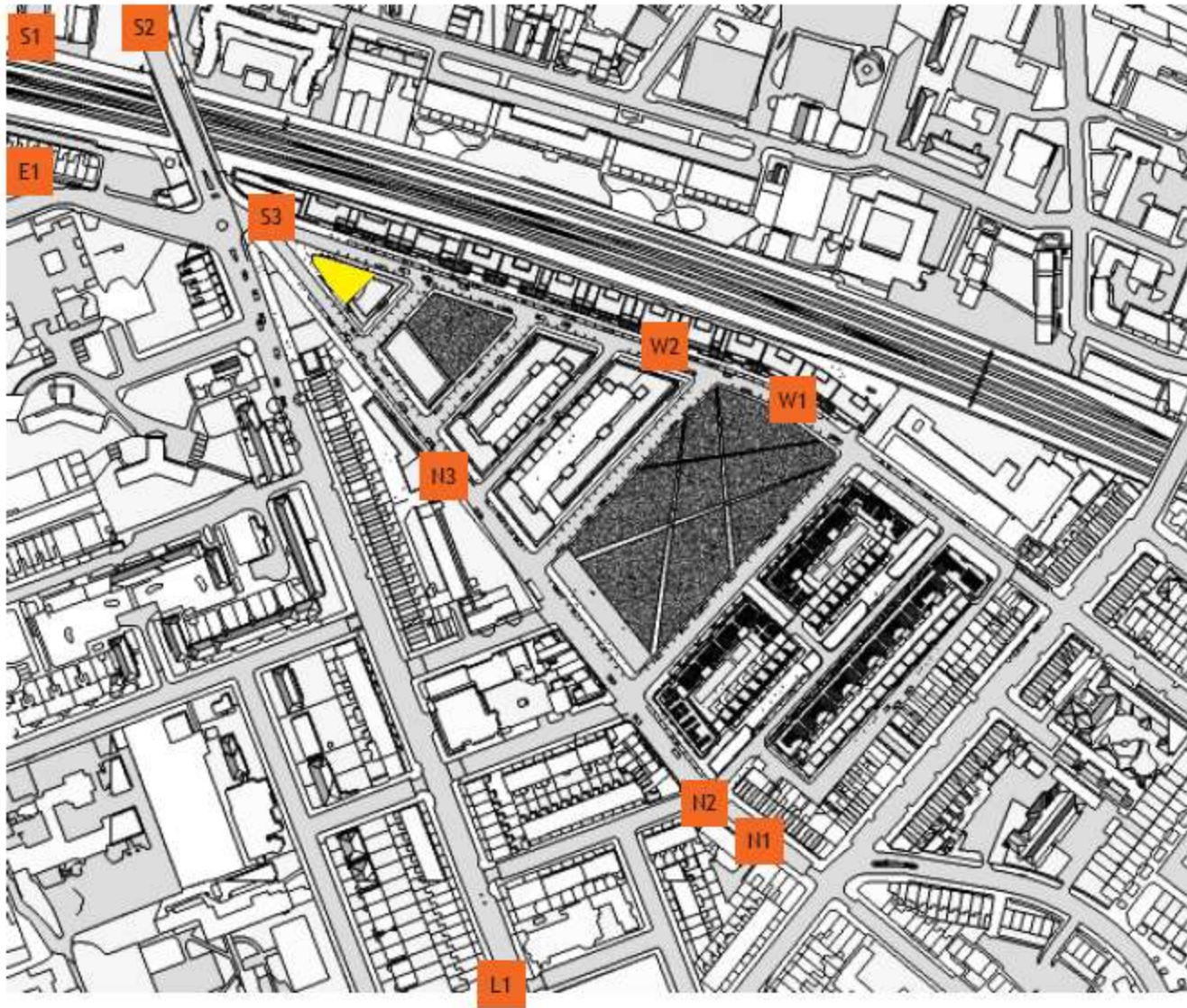


EXISTING VIEW 3
View from Fifth Avenue looking south towards the site.

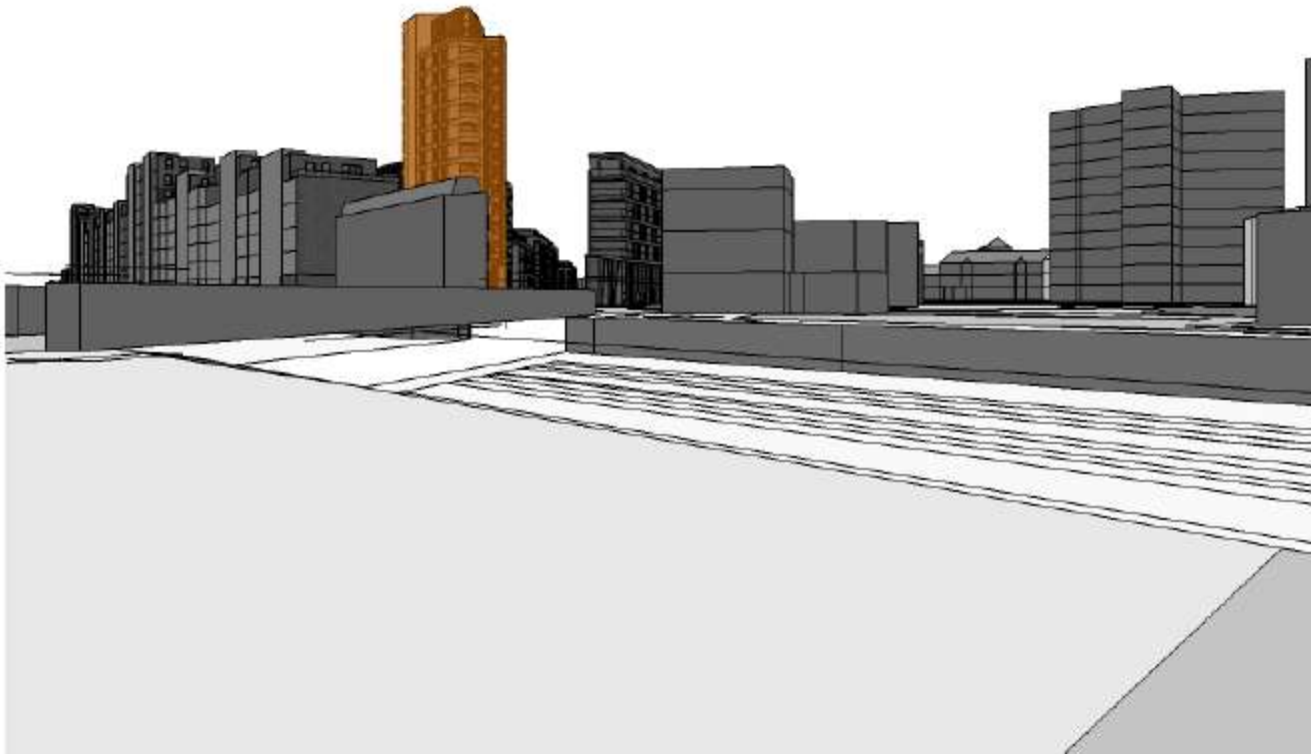




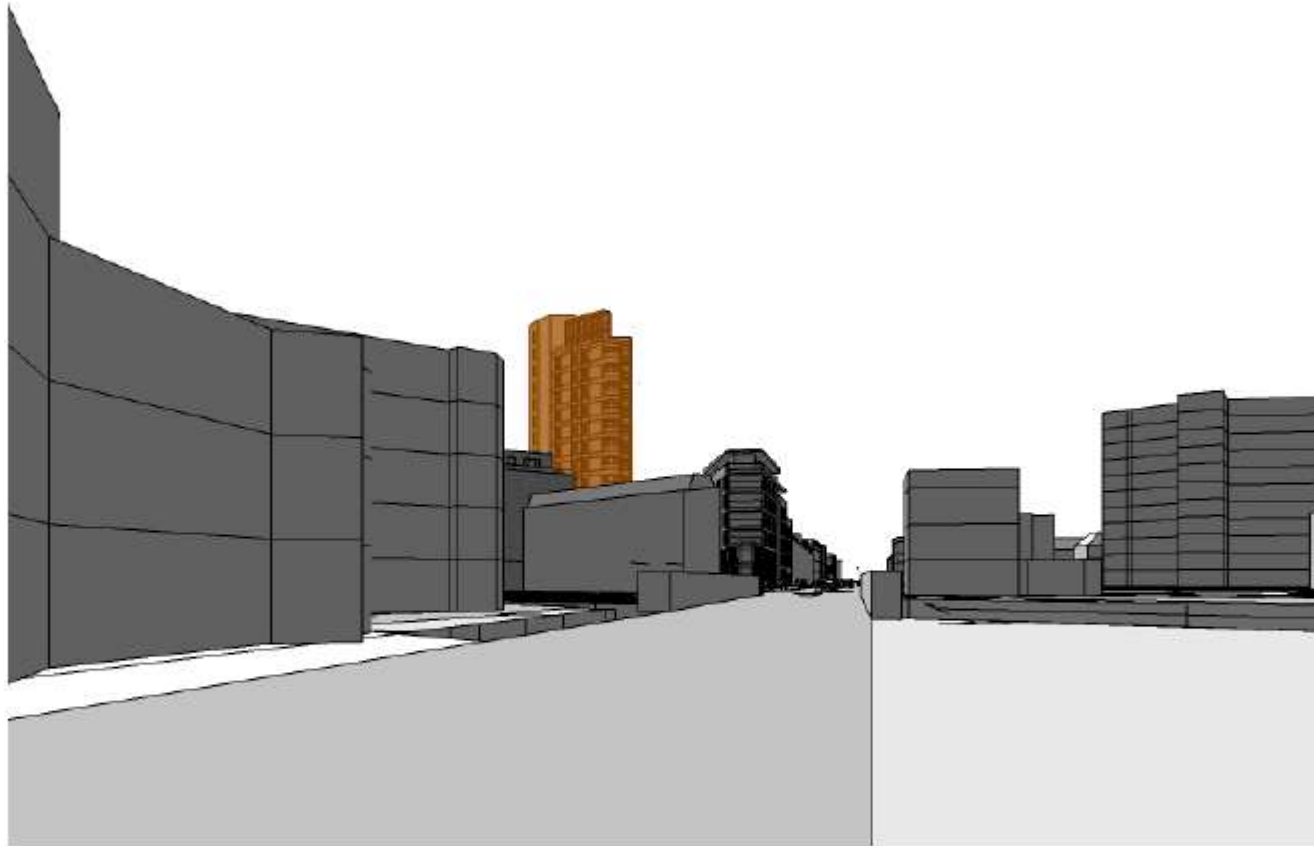




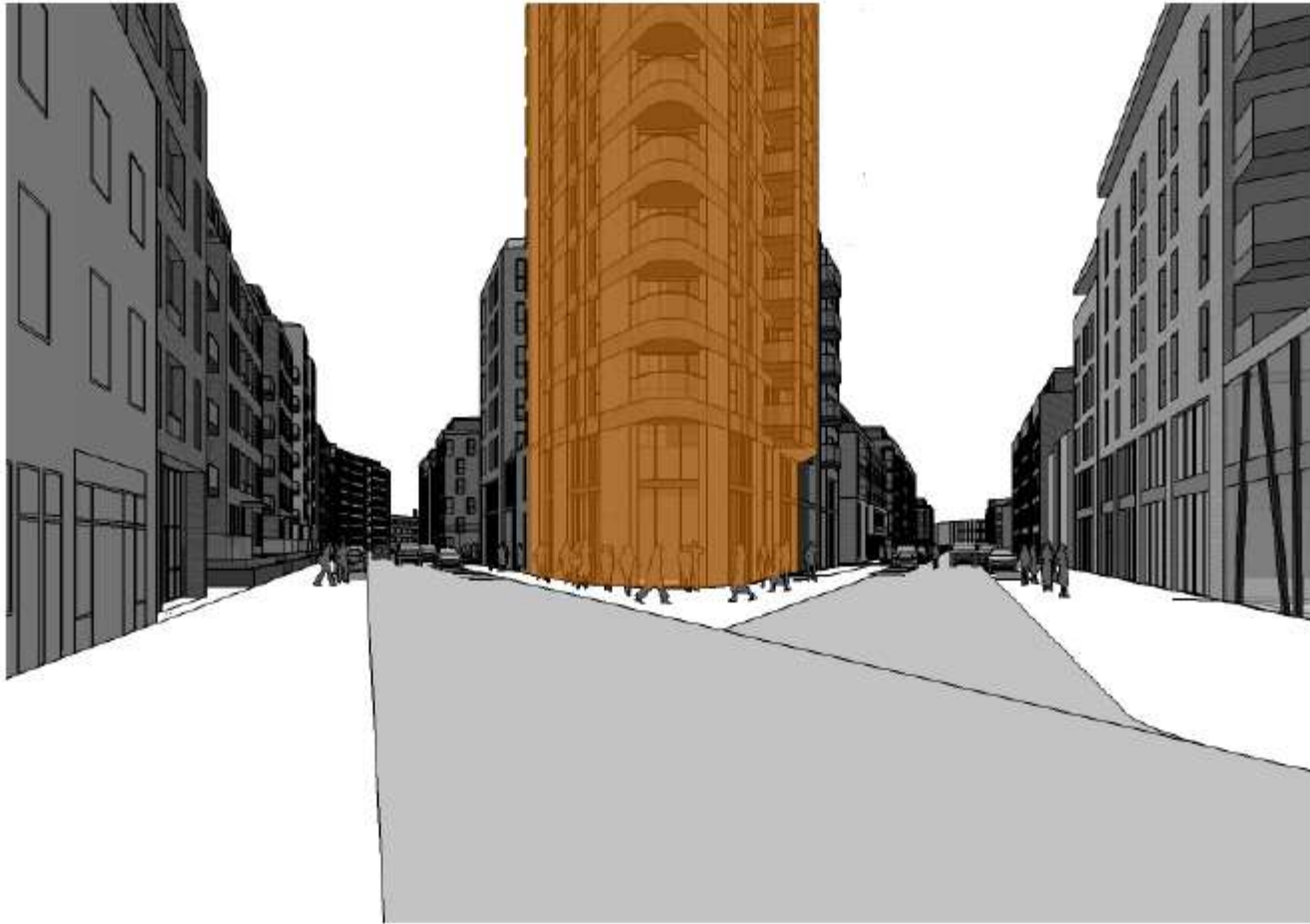
Keyplan



VIEW S1 - FROM CROSSRAIL SITE LOOKING SOUTH



VIEW S2 - CROSSING RAILWAY BRIDGE TO
LADBROKE GROVE



VIEW S3 - AT NORTHERN GATEWAY TO PORTOBELLO
RD ON RIGHT, WITH WORNINGTON ROAD ON LEFT



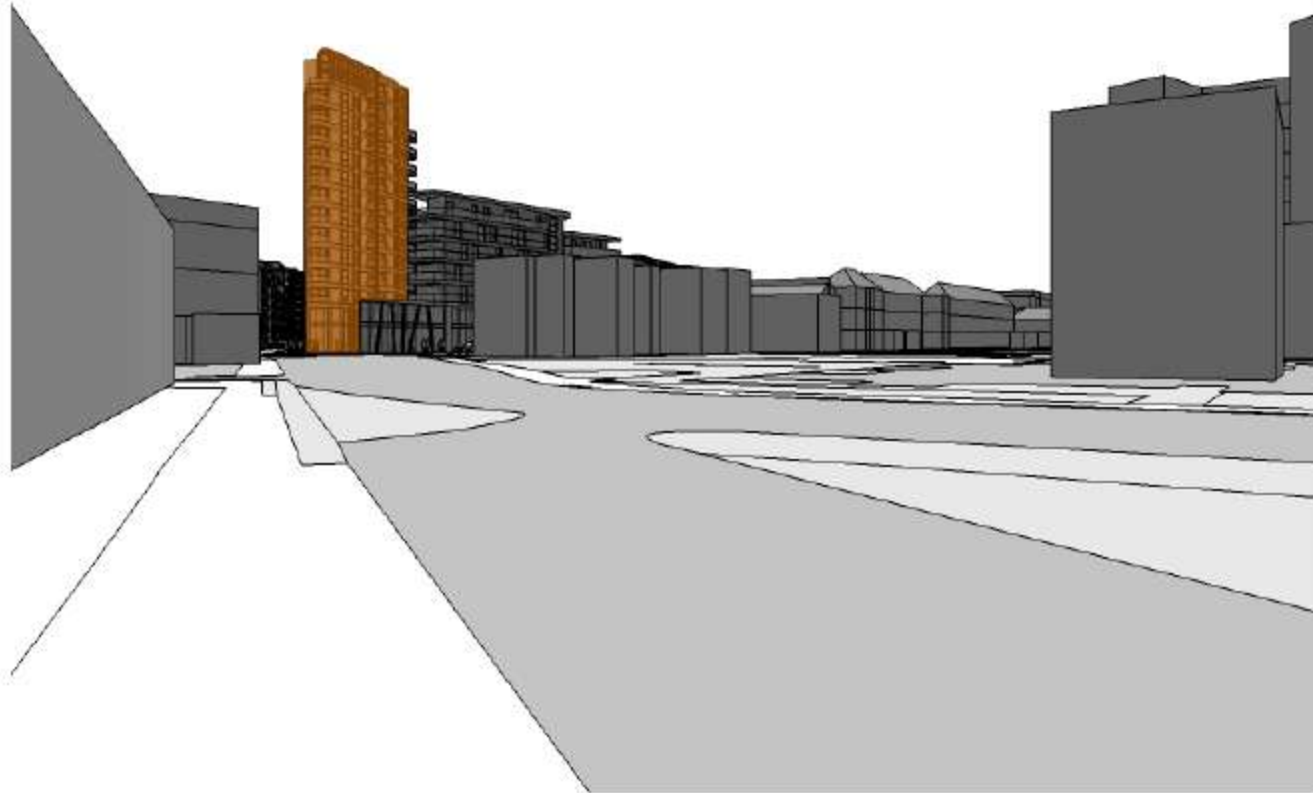
VIEW N1 - FIRST GLIMPSE OF TALL BUILDING
LOOKING NORTH ON PORTOBELLO RD



VIEW N2 - LOOKING NORTH ON PORTOBELLO RD AT
CORNER OF BONCHURCH ST



VIEW N3 - LOOKING NORTH ON PORTOBELLO RD,
HAVING JUST PASSED THE TMO BUILDING ON LEFT



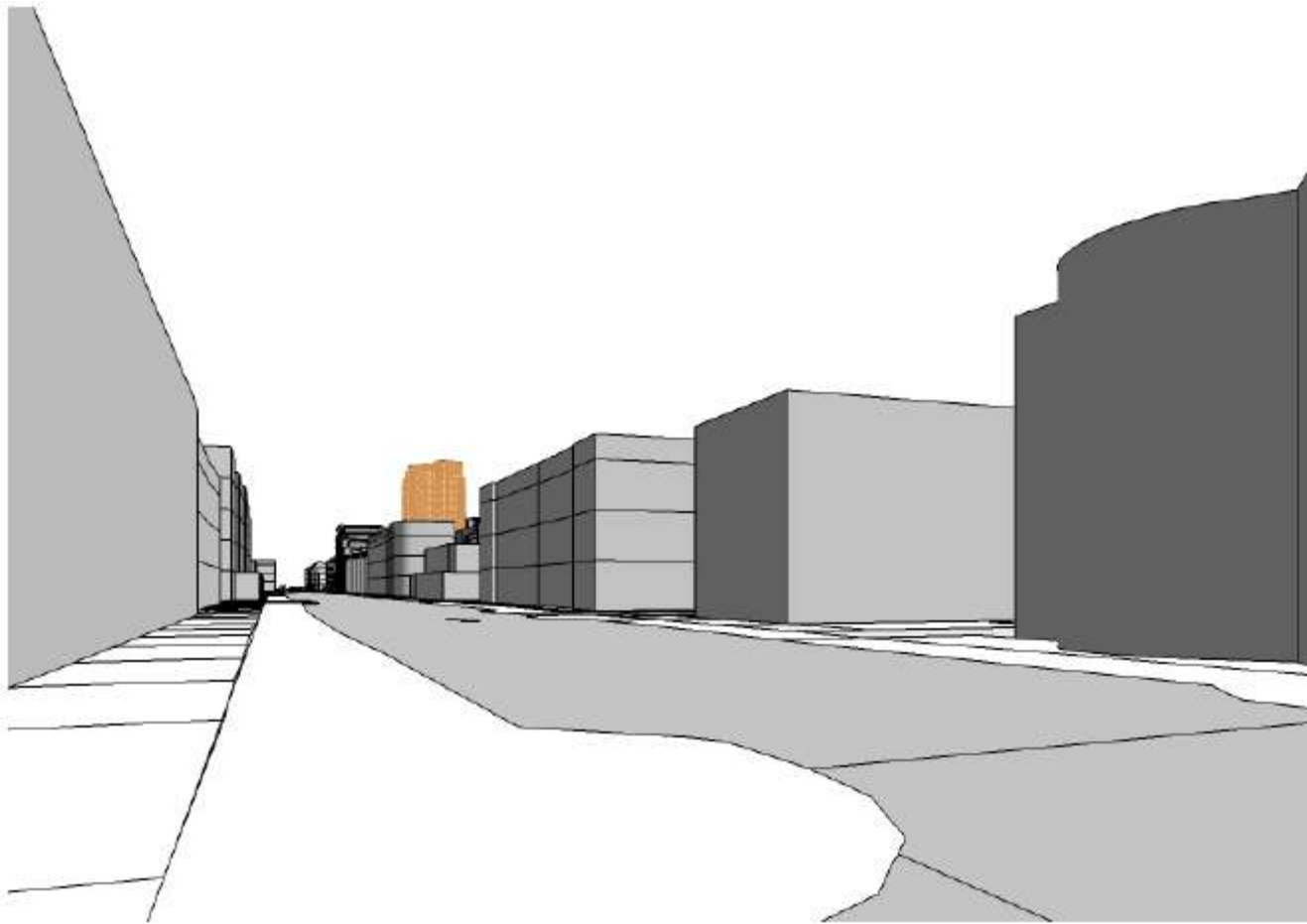
VIEW E1 - LOOKING EAST ALONG BARLBY RD,
APPROACHING ROUNDABOUT AT LADBROKE GROVE



VIEW W1- FROM WORNINGTON RD AT NEW ATHLONE GARDENS, HEADING NORTH-WEST



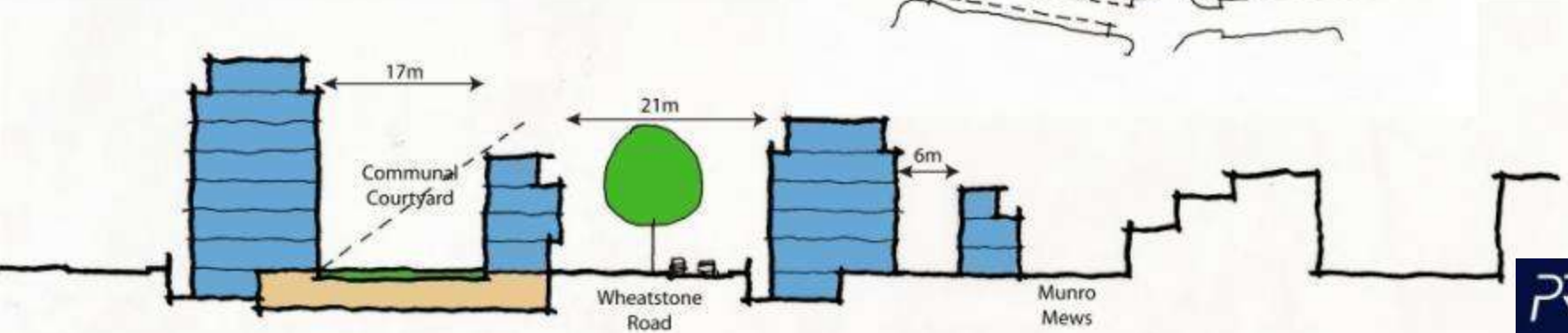
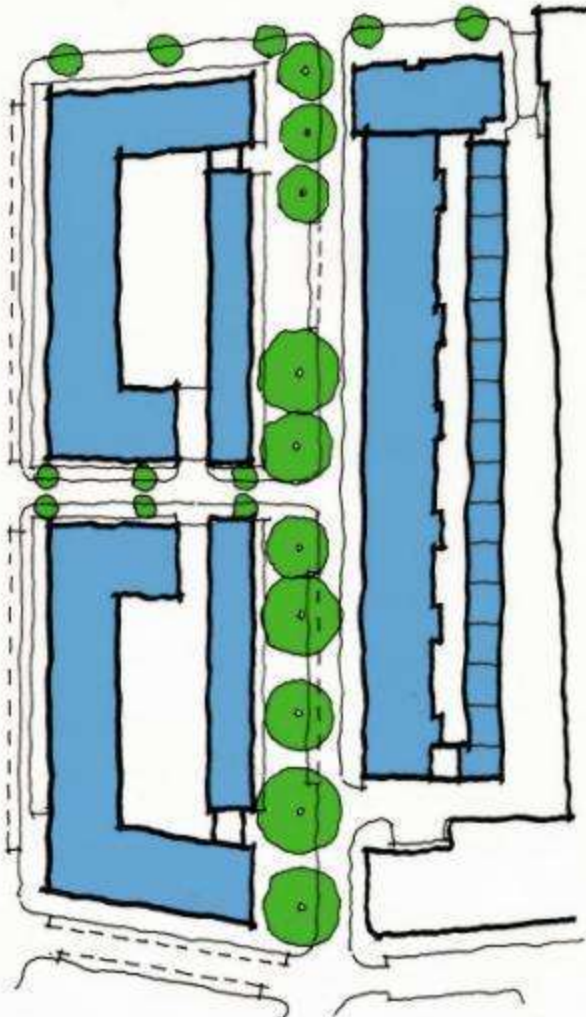
VIEW W2 - CONTINUING ALONG WORNINGTON RD TO
ROUNDBOUT AT LADBROKE GROVE



VIEW L1 - LOOKING NORTH ALONG LADBROKE GROVE
WITH ST MICHAEL'S CHURCH IN RIGHT FOREGROUND



Current Proposal



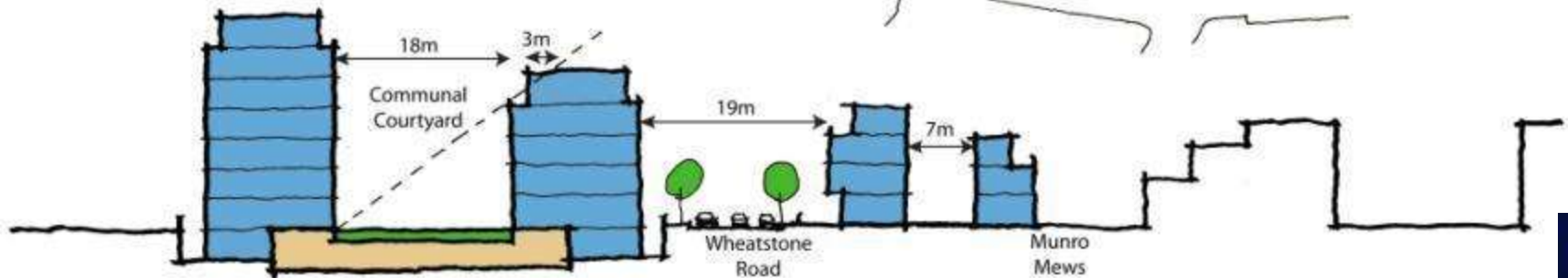
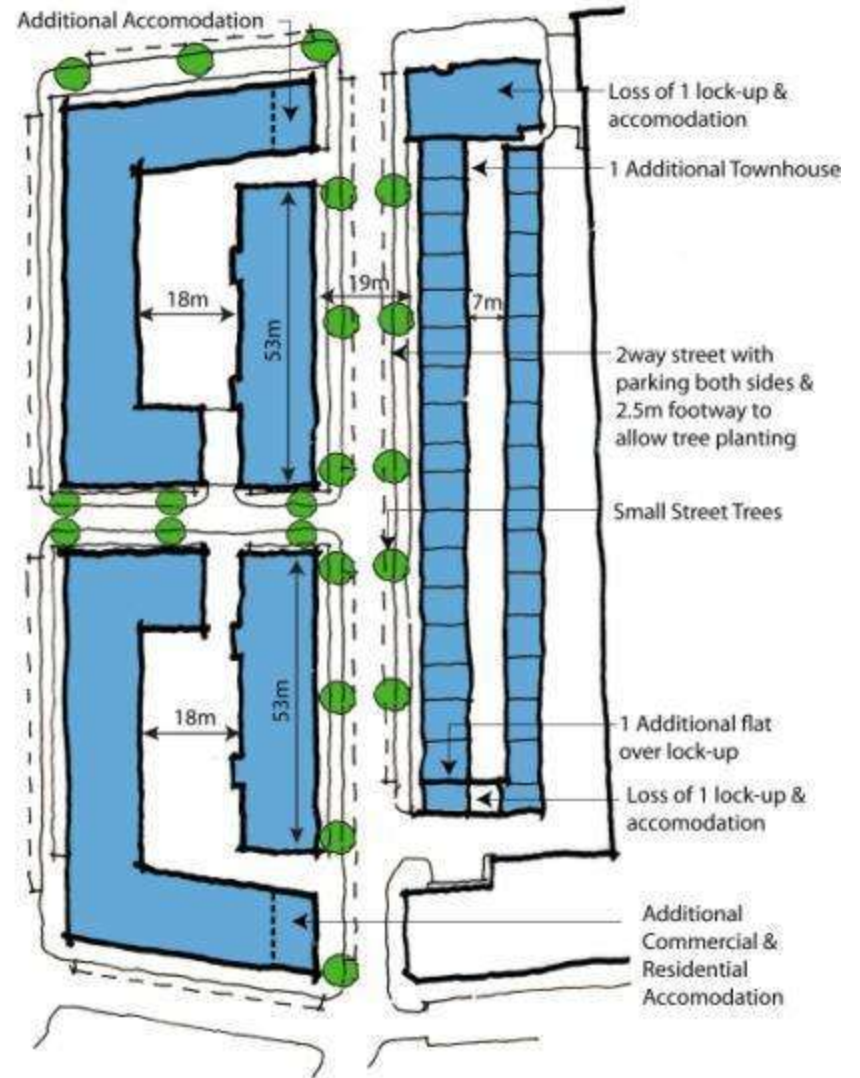
Option B

Pros

- Additional commercial area along Portobello Rd
- Additional residential accomodation in block 2 & 3

Cons

- Loss of existing large street trees along Wheatstone Road
- Loss of 2 market lock-ups in Block 1
- Loss of residential accomodation in Block 1
- Inbalanced mix of private and affordable housing where Block 1 is predominately private
- Loss of carparking to Townhouses



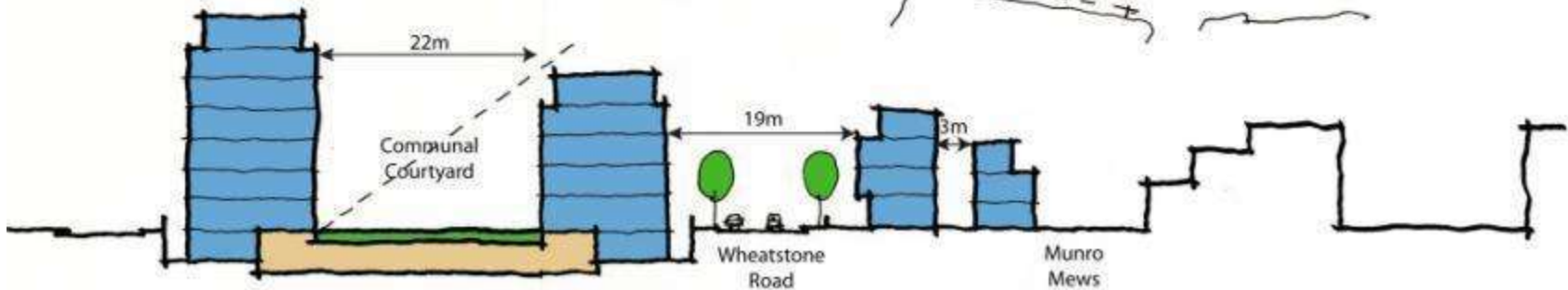
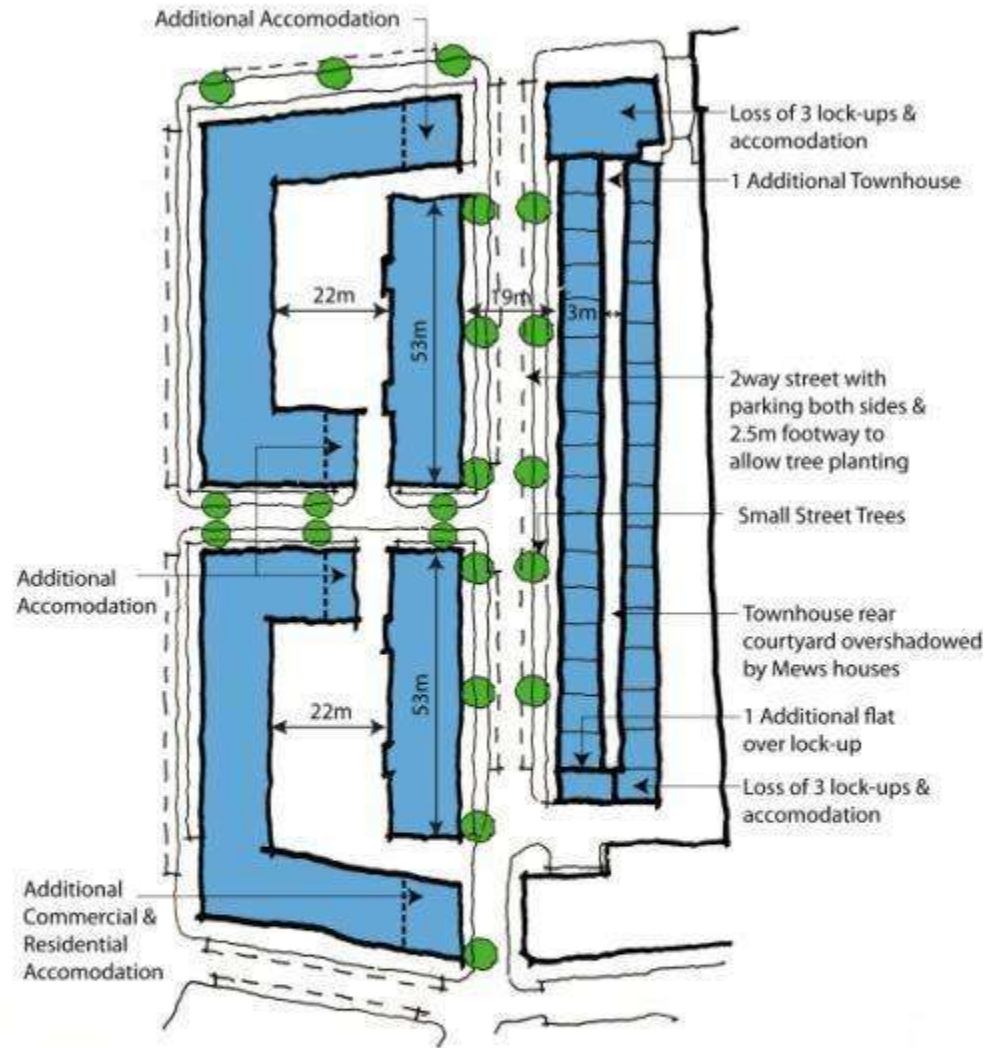
Option C

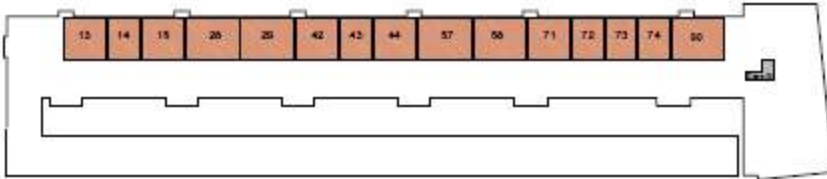
Pros

- Additional commercial area along Portobello Rd
- Additional residential accomodation in block 2 & 3

Cons

- Loss of existing large street trees along Wheatstone Road
- Loss of 6 market lock-ups in Block 1
- Loss of residential accomodation in Block 1
- Over shadowing of Townhouse rear courtyard by Mews Houses
- Inbalanced mix of private and affordable housing where Block 1 is predominately private
- Loss of carparking to Townhouses

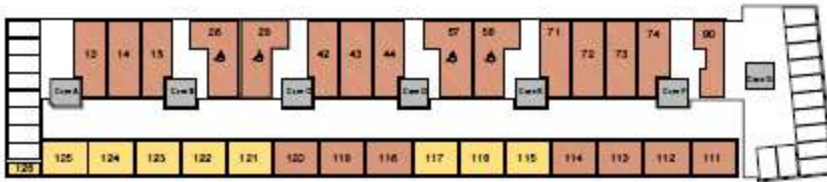




Basement Level (-01)



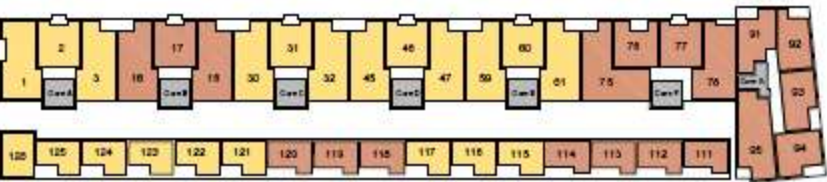
Second Floor Level (02)



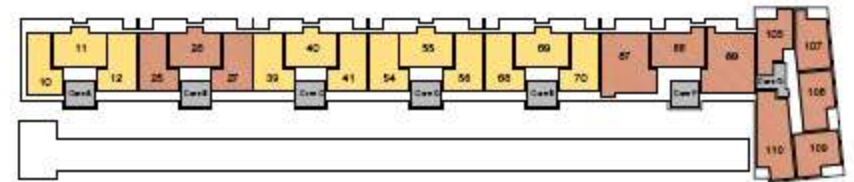
Ground Floor Level (-00)



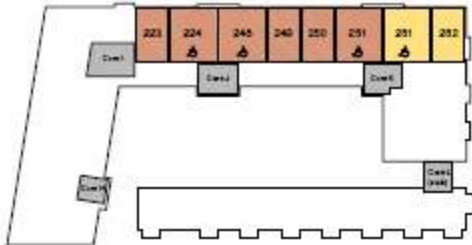
Third Floor Level (03)



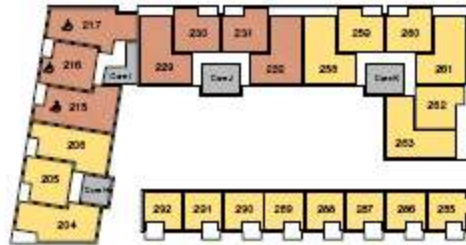
First Floor Level (01)



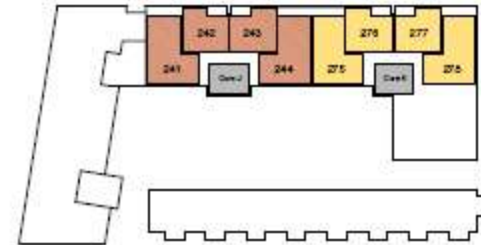
Fourth Floor Level (04)



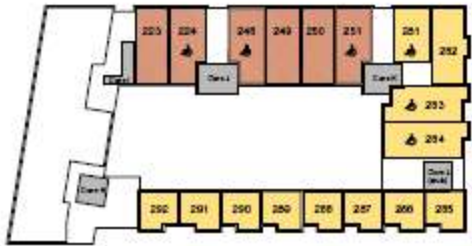
Basement Level (-01)



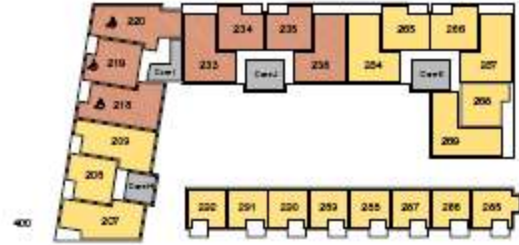
Second Floor Level (02)



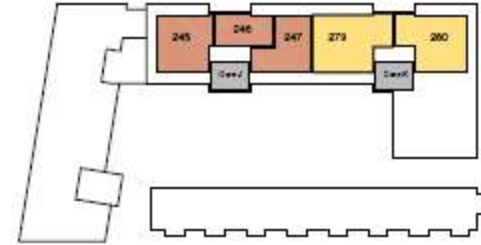
Fifth Floor Level (05)



Ground Floor Level (-00)



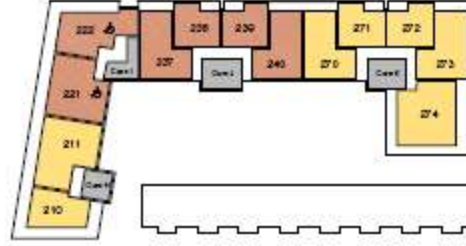
Third Floor Level (03)



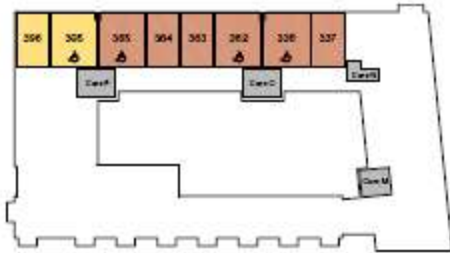
Sixth Floor Level (06)



First Floor Level (01)



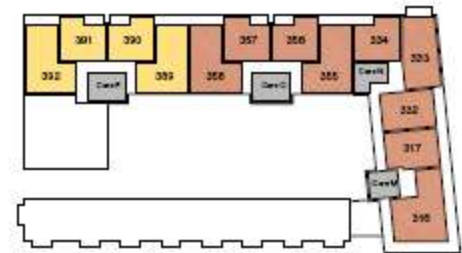
Fourth Floor Level (04)



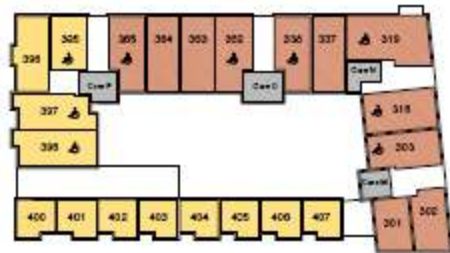
Basement Level (-01)



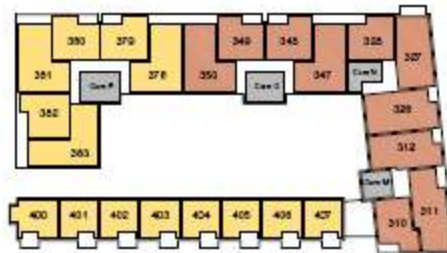
Second Floor Level (02)



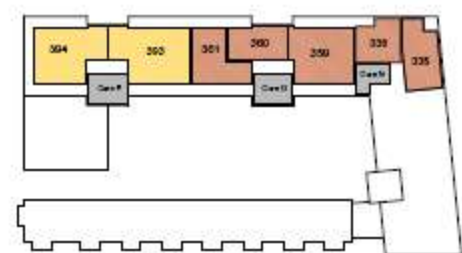
Fifth Floor Level (05)



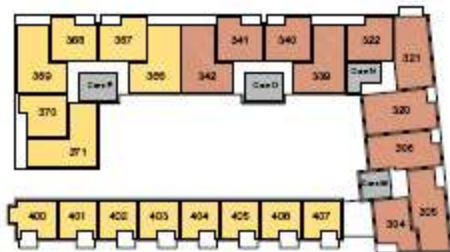
Ground Floor Level (-00)

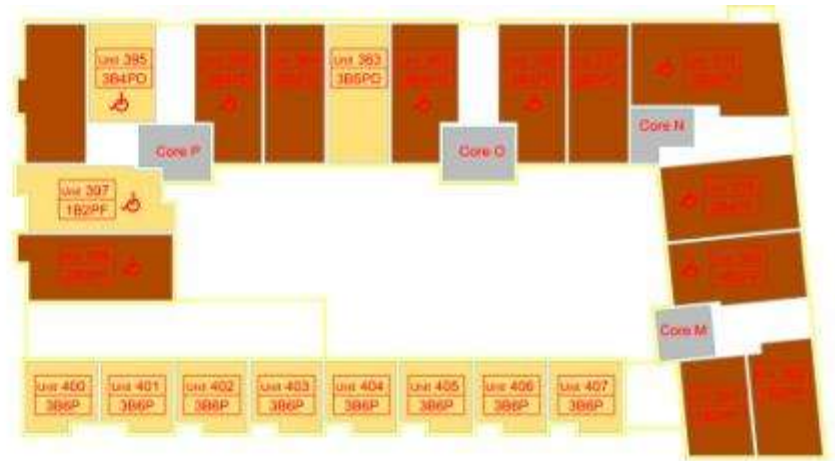
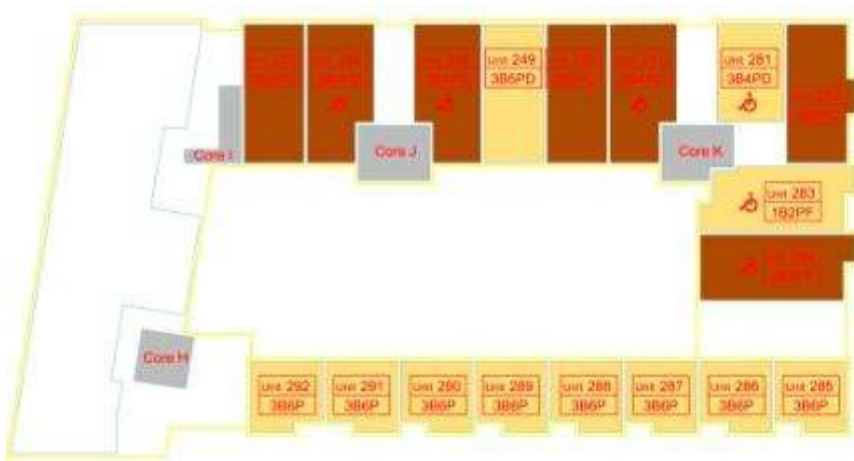


Third Floor Level (03)

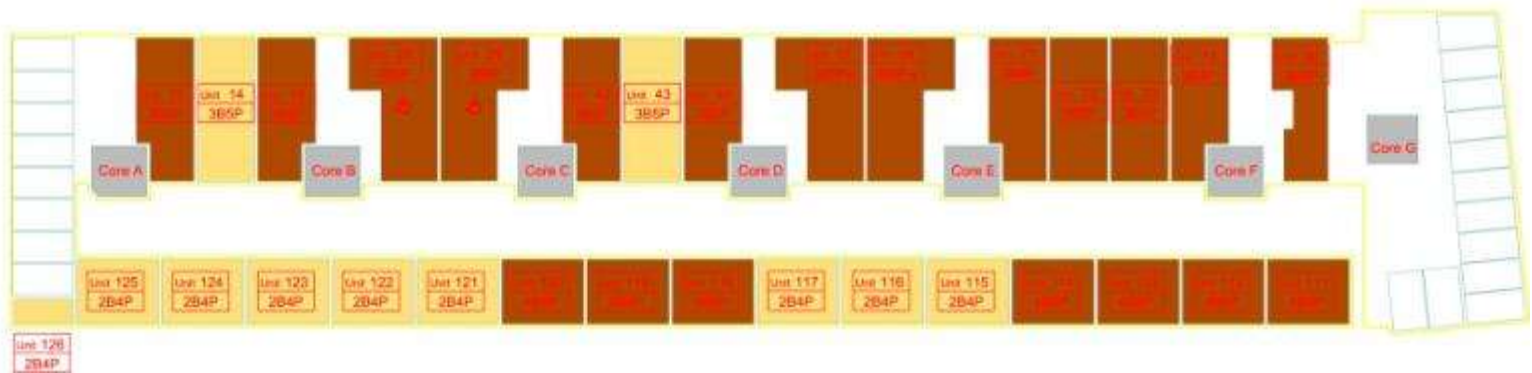


Sixth Floor Level (06)





GROUND FLOOR

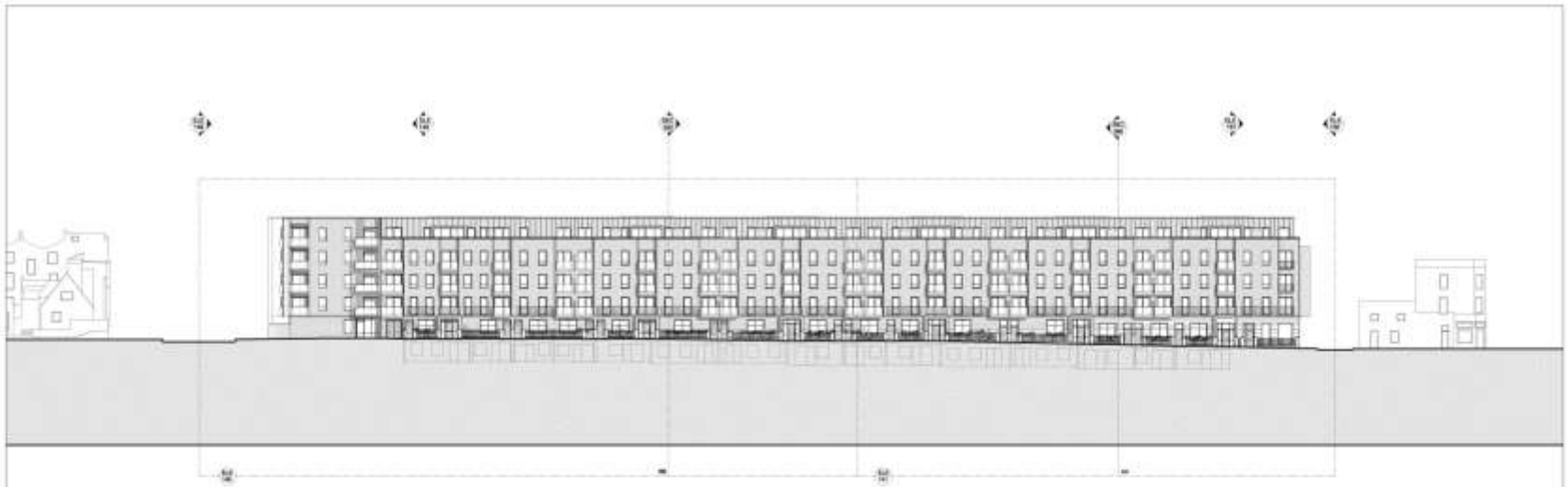












101 Block 1, Wheatstone Road, North West



101 Block 1, Wheatstone Road, South East

Date / Rev / Revision Author Checker
 01/18 / 0 / 000000000000000000 00 / 00

WORNINGTON GREEN
 PHASE 1 - PLANNING SUBMISSION

no. A4001_1_1_0001 of Block 1
 scale = 1:200 Wheatstone Rd (NW & SE)
 date 26.10.09 of 8 Elevations / Sections







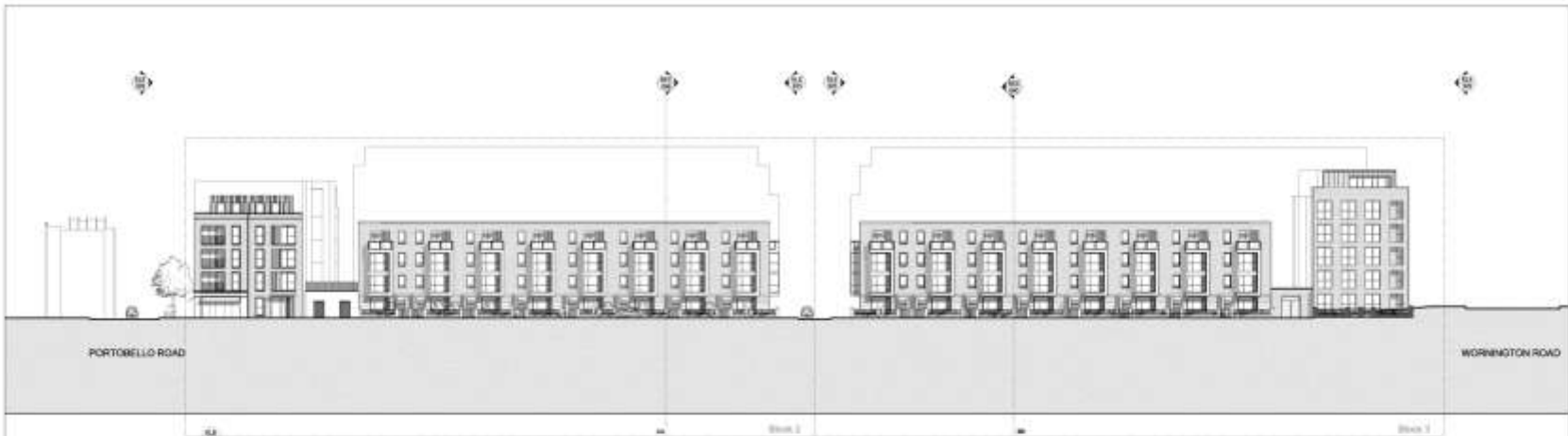












Block 1, Town House (NW & SE)



Block 2, Town House (NW & SE)

Site / No / Revision / Author / Checker
 11/14 / 1 / 1 / 1 / 1 / 1

WORNINGTON GREEN
 PHASE 1 - PLANNING SUBMISSION

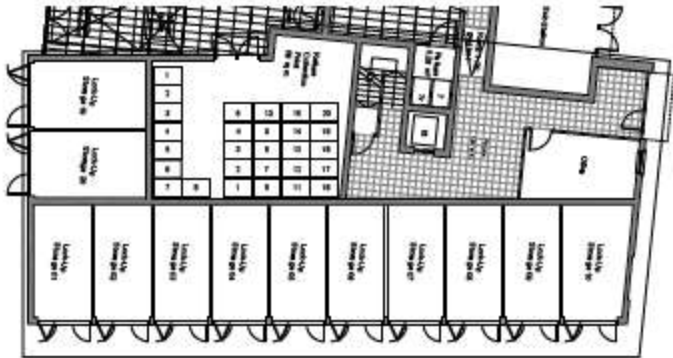
no - AM91.1.1.081 - Blocks 2 & 3:
 scale - 1:200 - Town House (NW & SE)
 date - 31.10.09 - Elevations / Sections



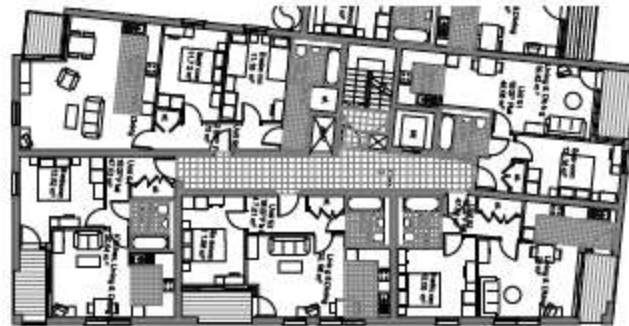








Ground Floor Plan



Typical Floor Plan

- MATERIAL SCHEDULE**
- ① LOW-MODERN STAFF FINISH BROCKTYPE 1
 - ② LOW-MODERN STAFF FINISH BROCKTYPE 2
 - ③ ALUMINUM EXTERIOR WINDOW CASING/GRAB BAR
 - ④ ALUMINUM EXTERIOR WINDOW CASING/GRAB BAR
 - ⑤ METAL PANEL TRIMER GARAGE DOOR
 - ⑥ TRIM/PANEL, FACIA ENTRANCE DOOR
 - ⑦ CONCRETE/BRICK/STONE FINISH LOW RISE
 - ⑧ PAINT/STAIN/STAIN FINISH LOW RISE
 - ⑨ PAINT/STAIN/STAIN FINISH LOW RISE
 - ⑩ PAINT/STAIN/STAIN FINISH LOW RISE
 - ⑪ PAINT/STAIN/STAIN FINISH LOW RISE
 - ⑫ PAINT/STAIN/STAIN FINISH LOW RISE
 - ⑬ PAINT/STAIN/STAIN FINISH LOW RISE
 - ⑭ PAINT/STAIN/STAIN FINISH LOW RISE
 - ⑮ PAINT/STAIN/STAIN FINISH LOW RISE
 - ⑯ PAINT/STAIN/STAIN FINISH LOW RISE
 - ⑰ PAINT/STAIN/STAIN FINISH LOW RISE
 - ⑱ PAINT/STAIN/STAIN FINISH LOW RISE
 - ⑲ PAINT/STAIN/STAIN FINISH LOW RISE
 - ⑳ PAINT/STAIN/STAIN FINISH LOW RISE
 - ㉑ PAINT/STAIN/STAIN FINISH LOW RISE
 - ㉒ PAINT/STAIN/STAIN FINISH LOW RISE
 - ㉓ PAINT/STAIN/STAIN FINISH LOW RISE
 - ㉔ PAINT/STAIN/STAIN FINISH LOW RISE
 - ㉕ PAINT/STAIN/STAIN FINISH LOW RISE
 - ㉖ PAINT/STAIN/STAIN FINISH LOW RISE
 - ㉗ PAINT/STAIN/STAIN FINISH LOW RISE
 - ㉘ PAINT/STAIN/STAIN FINISH LOW RISE
 - ㉙ PAINT/STAIN/STAIN FINISH LOW RISE
 - ㉚ PAINT/STAIN/STAIN FINISH LOW RISE
 - ㉛ PAINT/STAIN/STAIN FINISH LOW RISE
 - ㉜ PAINT/STAIN/STAIN FINISH LOW RISE
 - ㉝ PAINT/STAIN/STAIN FINISH LOW RISE
 - ㉞ PAINT/STAIN/STAIN FINISH LOW RISE
 - ㉟ PAINT/STAIN/STAIN FINISH LOW RISE
 - ㊱ PAINT/STAIN/STAIN FINISH LOW RISE
 - ㊲ PAINT/STAIN/STAIN FINISH LOW RISE
 - ㊳ PAINT/STAIN/STAIN FINISH LOW RISE
 - ㊴ PAINT/STAIN/STAIN FINISH LOW RISE
 - ㊵ PAINT/STAIN/STAIN FINISH LOW RISE
 - ㊶ PAINT/STAIN/STAIN FINISH LOW RISE
 - ㊷ PAINT/STAIN/STAIN FINISH LOW RISE
 - ㊸ PAINT/STAIN/STAIN FINISH LOW RISE
 - ㊹ PAINT/STAIN/STAIN FINISH LOW RISE
 - ㊺ PAINT/STAIN/STAIN FINISH LOW RISE
 - ㊻ PAINT/STAIN/STAIN FINISH LOW RISE
 - ㊼ PAINT/STAIN/STAIN FINISH LOW RISE
 - ㊽ PAINT/STAIN/STAIN FINISH LOW RISE
 - ㊾ PAINT/STAIN/STAIN FINISH LOW RISE
 - ㊿ PAINT/STAIN/STAIN FINISH LOW RISE



Block 1 Elevation
Warrington Road / North East



Block 1 Elevation
Warrington Road / North West



Block 1 Elevation
South East

Drawn by: [Name] / Checked by: [Name] / Date: [Date]

WORNINGTON GREEN
PHASE 1 - PLANNING SUBMISSION

Project: A660_21_0180 - Block 1
Scale: 1:100
Date: 20.12.20 - A





Block 1 (B)

Date: 11/11/2024
 Rev: 1
 Revision: 1
 Author: [Name]
 Checker: [Name]

WORNINGTON GREEN
 PHASE 1 - PLANNING SUBMISSION



Project: AN001_21_0100 - Block 1
 Level: Level 0 Plan
 File: 20-1028 - E - Plan 0 (2 of 2)

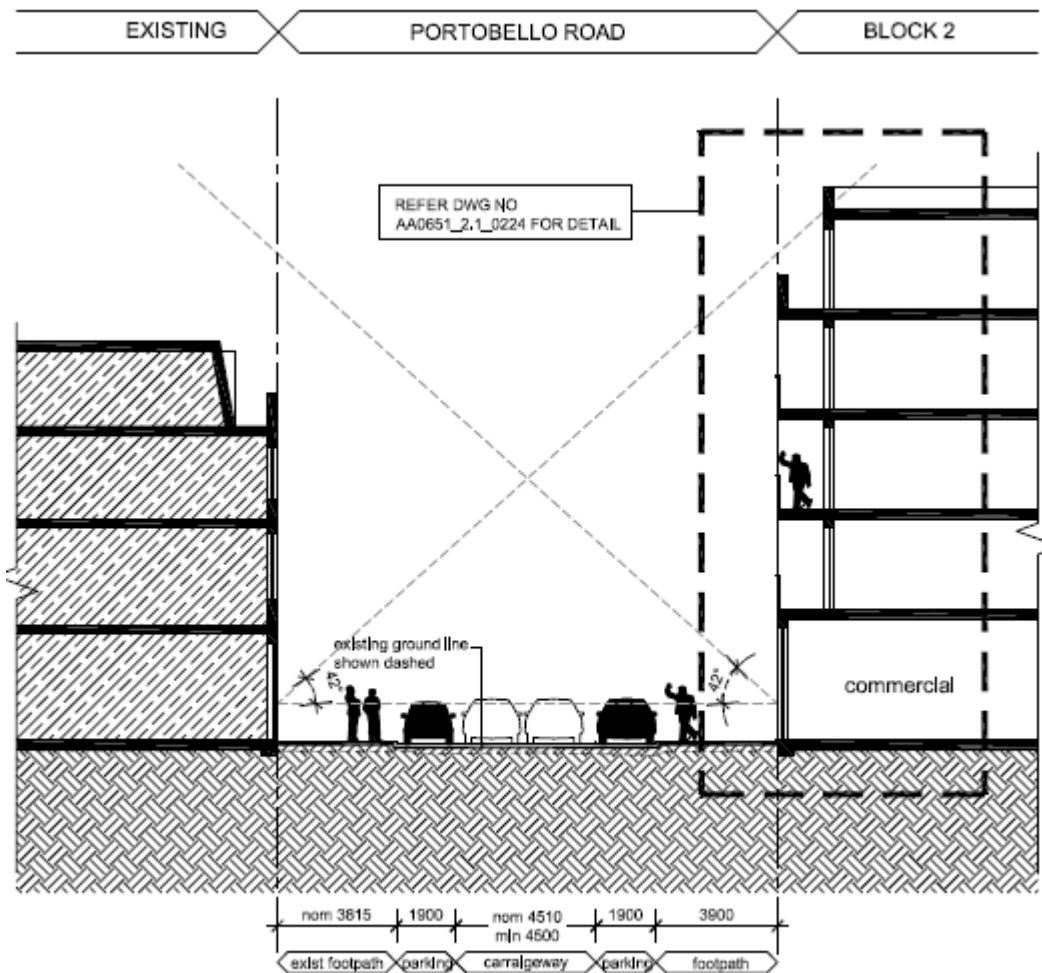




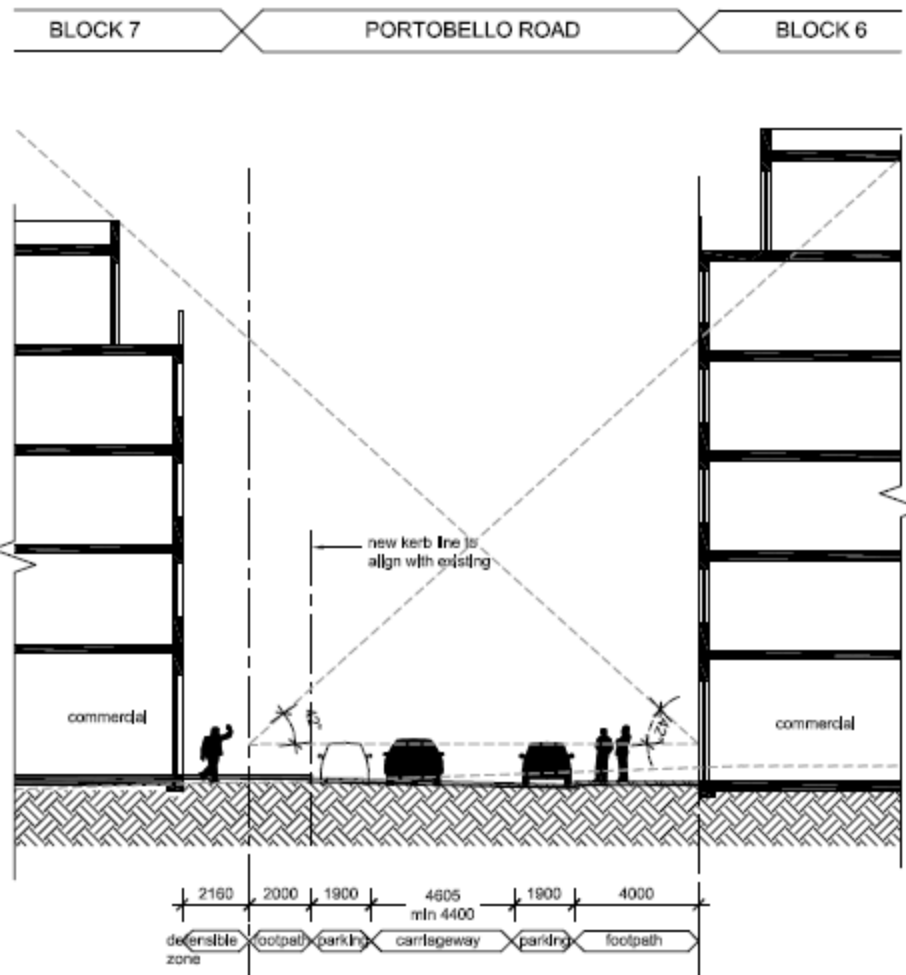
- End of presentation
- Some additional slides after this



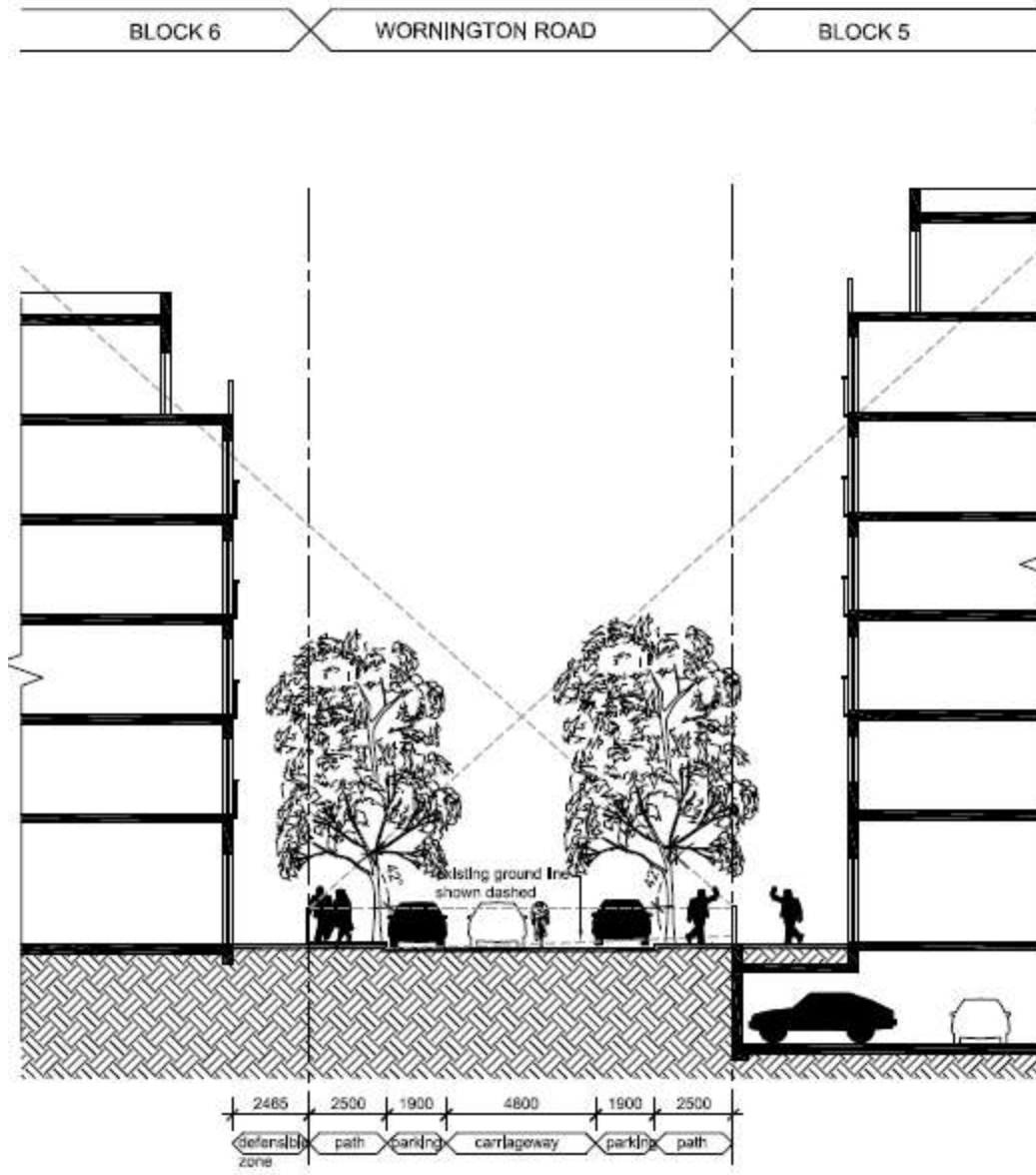




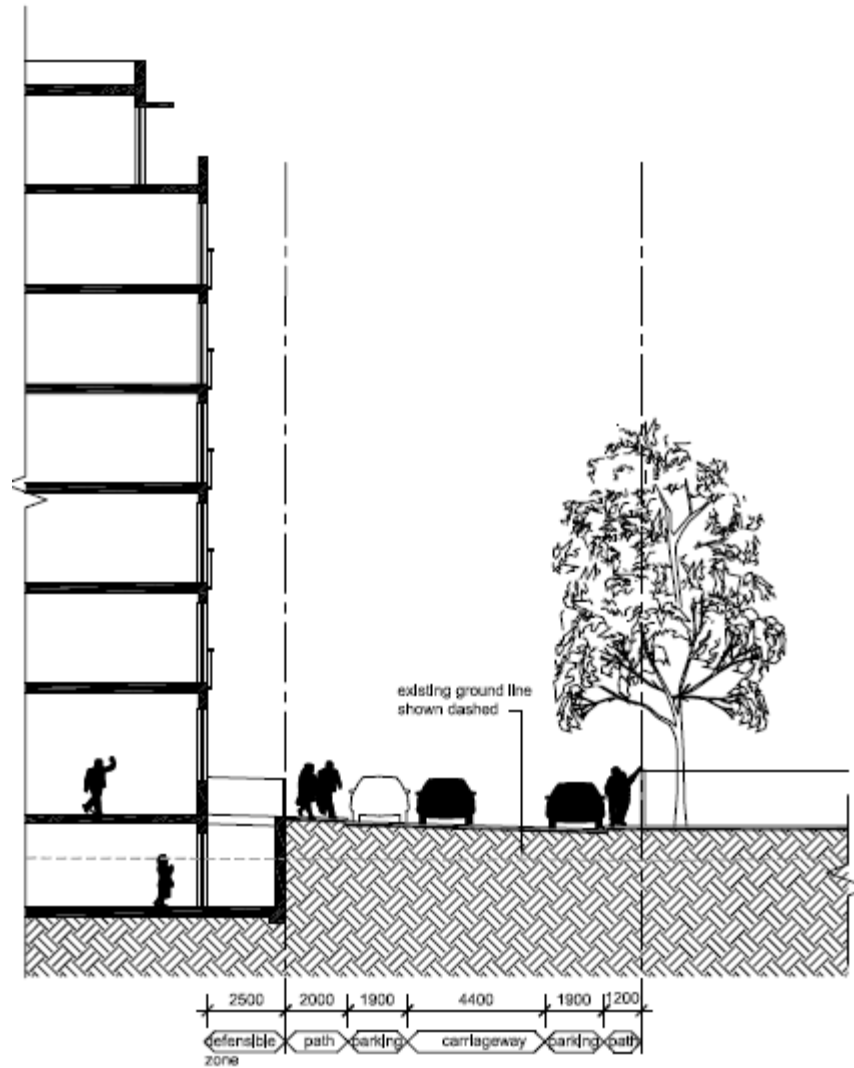
Section through Portobello Road looking with Phae 1 to the right.



Section through Portobello Road looking north, to the north of the new park.

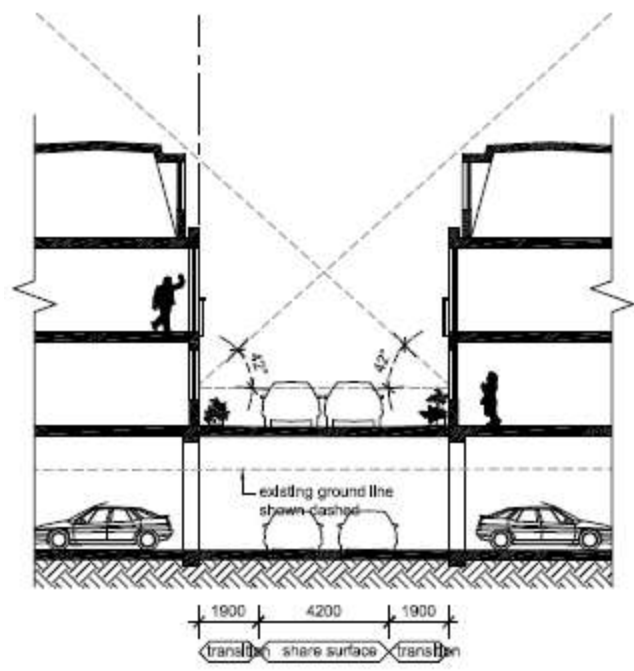


Section through Wornington Road looking north, to the north of the new park.



Section through the north side of the new park and Block 6.

BLOCK 6 TERRACE MURCHISON MEWS BLOCK 6 TERRACE



Section through the mews street to the north of the park.



Site Section through Indicative Warrington Green Masterplan



March 21st - 9am



March 21st - 10am



March 21st - 11am



March 21st - 12pm



March 21st - 1pm



March 21st - 2pm



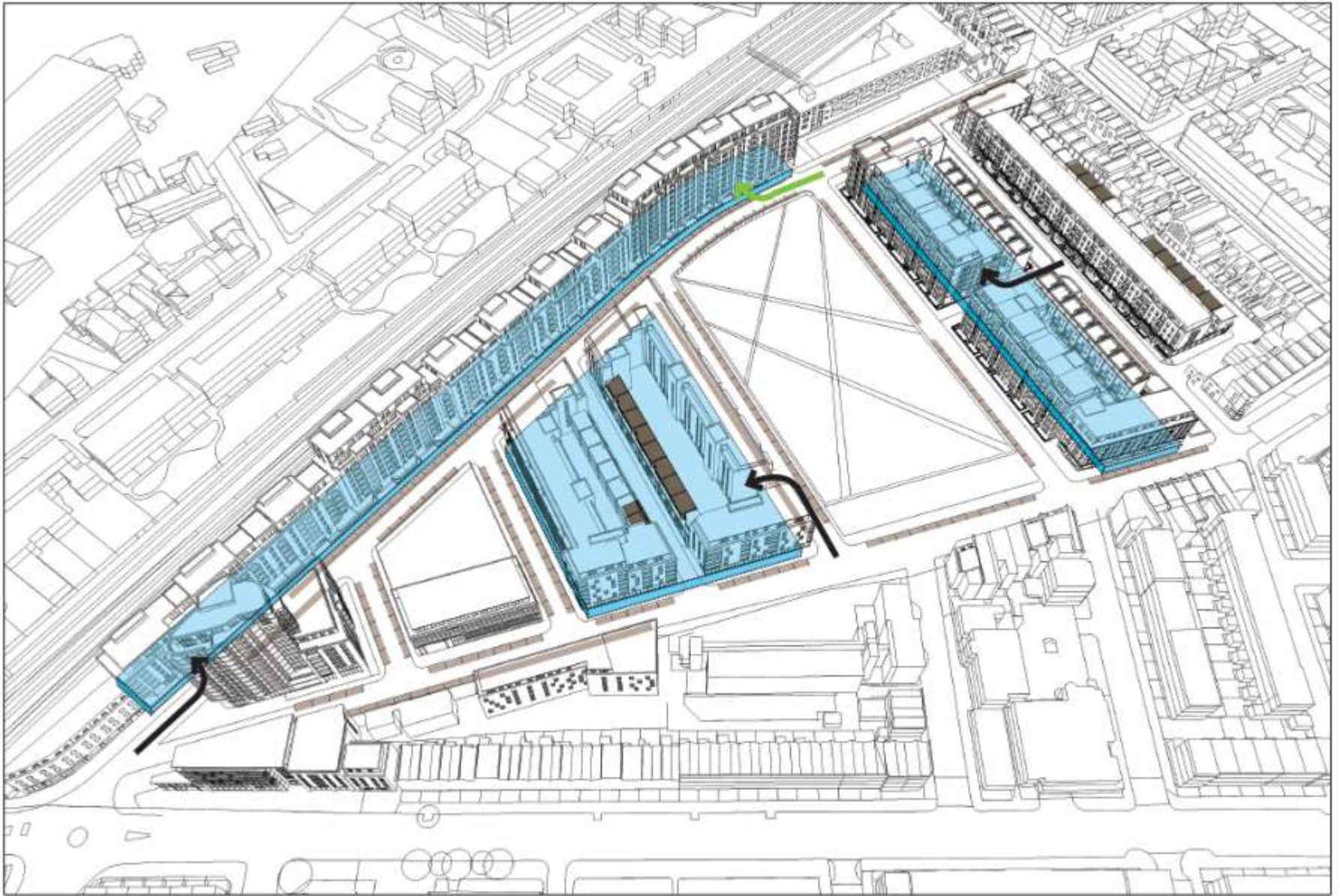
March 21st - 3pm



March 21st - 4pm



March 21st - 5pm



Indicative Parking Strategy and Cycle Storage